



THIS WEEK...



**CAL STATE FULLERTON @ BIG WEST
WOMEN'S BASKETBALL TOURNAMENT**

No. 6 Cal State Fullerton vs. No. 7 UC Riverside
Anaheim Convention Center • Anaheim, Calif.

*** Game will tip off 30 minutes following the Long Beach State-Utah State game beginning at 12 p.m.*

2003-04 SCHEDULE AND RESULTS

DATE	OPPONENT	TIME/RESULT
11/2	Love & Basketball (ex)	L, 79-73
11/13	Point Loma (DH) (ex)	W, 74-55
11/21	Fordham	L, 81-43
11/25	at (RV) New Mexico	L, 59-52
12/1	San Diego State	L, 73-50
HOLIDAY INN/JAYHAWK CLASSIC		
12/6	at Kansas	L, 90-46
12/7	vs. Alabama State	L, 65-63
12/9	Brigham Young	L, 72-51
12/13	UNLV (DH)	L, 71-59
12/19	Fresno State	L, 71-53
12/31	Idaho State	L, 74-58
1/3	* at CS Northridge	W, 66-65
1/5	* at Pacific	L, 75-64
1/10	* UC Riverside	W, 68-56
1/15	* Long Beach State	L, 77-65
1/17	* UC Irvine	L, 69-57
1/22	* at Utah State	W, 69-68
1/24	* at (RV) Idaho	W, 68-65
1/29	* Cal Poly	W, 83-81
1/31	* (RV) UC Santa Barbara	L, 67-48
2/7	* at UC Riverside	L, 67-63
2/12	* at UC Irvine	W, 59-50
2/14	* at Long Beach State	L, 74-43
2/19	* Idaho	L, 78-69
2/21	* Utah State	W, 71-59
2/28	* at Cal Poly	L, 89-63
3/1	* at (RV) UC Santa Barbara	L, 75-38
3/4	* Pacific	L, 80-70
3/6	* CS Northridge	W, 73-65
3/10-13	at Big West Conference Tournament (Anaheim Convention Center)	

* Big West Conference Game
(DH) denotes doubleheader with men's team
Home Games in **BOLD** and played on campus at Titan Gym
All Game Times Pacific Standard Time unless noted

GAMES
28-??

@ BIG WEST TOURNAMENT

Titans enter tournament at No. 6 seed, face Riverside in first round looking for 1st tourney win since 1995

CAL STATE FULLERTON TENTATIVE STARTERS (STATS AS OF MAR. 8, 2004)

Pos.	No.	Name	Ht.	Yr.	PPG	RPG	APG	FG%	FT%
PG	15	Meghann Keathley	5-5	Jr.	5.4	1.1	3.52	.405	.875
SG	52	Tamara Quinn	5-7	Sr.	11.1	4.4	3.31	.386	.821
C	33	Rochelle Ortega	6-2	Sr.	9.3	6.0	1.52	.433	.760
SF	23	Charlee Underwood	5-10	Fr.	9.0	3.7	1.59	.352	.562
PF	00	Amber Pruitt	6-1	So.	11.0	5.9	0.56	.391	.778

OFF THE BENCH...

Pos.	No.	Name	Ht.	Yr.	PPG	RPG	APG	FG%	FT%
F/C	4	Cynthia Sorrell	6-1	Jr.	3.0	2.1	0.24	.383	.308
SF	11	Tessa Moon	5-8	So.	3.3	1.1	0.67	.264	.588
PG	14	Audrey Taylor	5-5	So.	1.2	1.2	0.75	.091	.750
PF	20	Catherine Holman	6-2	Jr.	2.5	1.8	0.33	.464	.429
F	21	Nikki Lee	5-10	Sr.	0.6	0.4	0.45	.286	.750
PG	22	India McDaniel	5-7	Fr.	1.9	1.3	1.04	.294	.580
F	25	Jaime Wagner	5-9	Sr.	2.8	0.8	0.77	.400	.667
G/F	32	Ariel Adams	6-0	Fr.	0.6	0.9	0.07	.333	.250
F	44	Melanie Mosley	5-11	Jr.	1.9	1.8	0.32	.308	.632

FOR IMMEDIATE RELEASE • MAR. 8, 2004

THE SCENARIO

The Cal State Fullerton women's basketball team (8-19 overall, 8-10 in the Big West Conference) will head into this week's Big West Conference Women's Basketball Tournament as the No. 6 seed and will face UC Riverside in the first round on Wednesday afternoon at the Anaheim Convention Center.

The Titans-Highlanders match-up will begin 30 minutes after the conclusion of the tournament's first game featuring Long Beach State and Utah State, which begins at Noon. The winners of the first round games will advance to meet either No. 3 Pacific or No. 4 Cal Poly depending on seeding, with the lowest remaining seed facing the Tigers in Thursday's second round.

ON THE AIR

Cal State Fullerton's game on Wednesday afternoon will be broadcast live on the internet with Steve Henkle handling the play-by-play. Later broadcasts will be determined depending on the outcome.

QUINN, UNDERWOOD NAMED TO ALL-BIG WEST TEAMS

Cal State Fullerton senior Tamara Quinn and freshman forward Charlee Underwood were named to the All-Big West Conference teams for the 2003-04 season as announced by the league office on Monday morning.

Quinn (Lomita, Calif.) was named to the all-conference second team, becoming the first Titan to earn such an honor since Andrea Thieme earned second-team honors in 1996-97. Quinn averaged 11.1 ppg and 4.4 rpg during the regular season, while shooting .386 from the field, .342 from three-point range, and .821 from the free throw line.

In conference play, Quinn led the team in scoring at 12.4 ppg and averaged 5.4 rpg while shooting .394 from the field. Earlier in the year, she became the 14th player to score 1,000 career points in school history and currently ranks in No. 12 all-time on the school's career scoring list with 1,079 points.

Underwood (San Francisco, Calif.) was one of five players named to the Big West All-Freshman Team after a stellar rookie year. She is the third Titan to be named to the All-Freshman Team in the last four seasons joining Quinn (2000-01) and Andrea Adams (2002-03).

Underwood averaged 9.0 ppg and 3.7 rpg during the regular season to go along with a team-best 38 steals and appearing in all 27 games for the Titans (18 starts). She had 11 games of 10-or-more points, including in five straight at one point and in seven of her last 11 games.

In conference play, Underwood was one of four Titans who averaged double-figures, scoring 10.3 ppg and 4.5 rpg in 18 games.

AMBER PRUITT NAMED BIG WEST PLAYER OF THE WEEK

Cal State Fullerton sophomore forward Amber Pruitt was named the Big West Conference's Player of the Week on Monday afternoon, helping the Titans to a 1-1 week, including a season-ending victory over Cal State Northridge.

Pruitt scored a career-high 29 points in Fullerton's loss to Pacific and followed that performance up with a 22-point outing against the Matadors. For the week, Pruitt averaged 25.5 ppg

THE WEEK THAT WAS...

PRUITT'S 29 NOT ENOUGH AS TIGERS WIN, 80-70

Mar. 4, 2004 – Fullerton, Calif.

Cal State Fullerton's Amber Pruitt scored a career-high 29 points on 10-of-19 shooting, but it wasn't enough to counter a balanced Pacific offense as the Tigers held off the Titans, 80-70, in a Big West women's basketball match-up on Thursday night at Titan Gym.

Trailing by 16 points at halftime, Cal State Fullerton exploded to start the second half, going on a 10-3 run to close to within nine points with just under two minutes gone in the period.

A 9-4 spurt by Pacific extended the lead to 14 points, but the pesky Titans just wouldn't go away, as an 11-4 run of their own got them to within seven points at 61-54 with 7:22 remaining in the game.

That would be the closest Fullerton would come, however, as the Tigers went 9-for-12 at the line in the final 2:30 to hold off the Titans, including 7-for-8 at the line from Nancy Dinges, to ice the game.

Cal State Fullerton could not recover from a first half slump which saw the Titans hit just nine field goals and shoot .375 from the field. The Tigers, on the other hand, hit 18-of-29 (.621) and outrebounded Fullerton, 22-8, in the opening period.

Of Pruitt's 29 points, 18 came in the second half on 6-of-11 shooting, and she grabbed eight rebounds on the night. Senior Rochelle Ortega also finished in double figures with 14 points and eight boards.

Pacific had four players in double figures led off the bench by Gillian d'Hondt, who had 21 points on 9-of-12 shooting from the field. Nancy Dinges hit four three pointers and finished with 19 points, while Andrea Nesterostek and Corinne Wong each chipped in 10 points in the victory. Wong added 11 assists to complete her double-double.

SENIORS GO OUT IN STYLE WITH 73-65 WIN

March 6, 2004 – Fullerton, Calif.

Cal State Fullerton battled back from a five-point halftime deficit, outscoring visiting Cal State Northridge by 13 points in the second half and shooting just under 54 percent from the floor for the game en route to a 73-65 women's basketball victory on Saturday night at Titan Gym.

The Titans were led by sophomore Amber Pruitt, who followed her career-high 29 points scoring on Thursday against Pacific with a game-high 22 points on 10-of-15 shooting. Senior Rochelle Ortega added 14 points, four rebounds and a pair of blocks while junior Meghann Keathley added 10 points and seven assists.

The Matadors were led by Ofa Tulikihifo's double-double of 16 points and 19 rebounds -- 10 of those boards coming in the first half alone. Krisztina Fuleki added 17 points off the bench while Brezva Rhodes had 11 points and seven rebounds.

A messy first half saw the team's combine to go 0-for-12 from the field in the first 3:30 before Charlee Underwood broke the drought for the Titans with a three-pointer for the first points of the game at the 16:32 mark. Northridge was without a basket for the first 5:28 (0-for-10) before Tulikihifo nailed a short jumper to make it 5-2. The Titans led by as many as four points twice, but the Matadors went on an 8-2 run to take a two-point lead with 7:02 remaining.

That advantage grew to the halftime deficit of five points after Northridge tied it and took the lead on back-to-back buckets by Tulikihifo and a three pointer by Rhodes, for the 30-25 advantage.

The Matadors' lead grew to seven points in the first 1:30 of the second half, but three straight baskets by the Titans -- including a three-pointer by Keathley -- tied the score at 34-34. Northridge would hold the lead just once more at the 15:13 mark before a 10-3 run gave the Titans a six-point, 48-42, advantage and Fullerton never looked back.

Cal State Northridge got to within two points with 2:52 remaining on a jumper by Fuleki, but the Titans closed the half with a 9-3 run to seal the victory.

Fullerton shot 69 percent from the field in the second half to fuel the comeback and spread the wealth on offense with 25 assists on 29 made baskets. The Titans were also 8-for-15 from three-point range and 7-of-9 from the line. Northridge shot just .375 from the floor, but outrebounded Fullerton, 42-31.

and 5.5 rpg, while shooting .588 from the field (20-for-34) and .889 from the free throw line (8-for-9).

The scoring performances were her second and third 20-point games this season and the sixth and seventh double-digit scoring performances for her in her last nine games.

PLAYER OF THE WEEK HAPPENINGS

Here's something that hasn't happened in a long time. With Amber Pruitt's Player of the Week award on Monday, coupled with Tamara Quinn's award on Jan. 26, Cal State Fullerton had two conference player's of the week in the same season for the first time since Dee Braxton (1/2/16) and Kris Sigg (2/1/10) won the award during the 1996-97 season. It is only the fourth time since the Titans joined the Big West that they have had multiple player's of the week, as Koko Lahanas won it twice in 1994-95 and Eugenia Miller-Rycraw won the award a conference-record six times in 1990-91.

CAL STATE FULLERTON AT THE BIG WEST TOURNAMENT

The Titans are a combined 7-14 at the Big West Conference Tournament dating back to the 1985-86 season, losing their last five straight tournament games... Fullerton hasn't won a game at the Big West Tournament since the second round in 1995, defeating UCSB, 97-86... This season will be the first time in the last four years that the Titans will not have to face top-seeded UC Santa Barbara in the first round... Fullerton has reached the semifinals twice in 1991 and 1995, and the second round three times in 1986, 1988, and 1989... Cal State Fullerton is averaging 67.8 ppg in 21 conference tournament contests to its opponents' 74.6 ppg... The Titans have fallen by an average margin of 22.6 ppg over their last five tournament losses dating back to the 1994-95 season.

WINS, WINS, AND MORE WINS

Cal State Fullerton's eight victories this season are the most for the Titans since 1997-98 when Fullerton went 10-17 overall, and the eight conference wins are the most since 1994-95 when Fullerton went 8-10 in Big West play.

PROVING THE POLLSTERS WRONG

Four months ago at Big West Conference media day, both the coaches and local media outlets picked Cal State Fullerton to finish ninth in the 10-team Big West Conference, ahead of only first-year Utah State. What a different four months makes.

The Titans finished the regular season tied for fifth in the Big West Conference with archrival Long Beach State marking the highest regular season finish for Cal State Fullerton since it finished third in the Western Division in 1997-98. The 49ers, however, received the higher seed for this year's tournament by virtue of its season sweep of the Titans.

NEEDED FIVE, GOT SIX

With her six points on Saturday night against Cal State Northridge, Cal State Fullerton senior Tamara Quinn edged out Terri Withers for 12th place on the school's all-time scoring chart, scoring her 1,079th career point in the win against the Matadors. Quinn now needs 19 more points to move past two-sport star Jill Matyuch (now an assistant softball coach at the University of Texas), for No. 11 on the all-time list.

THIS IS QUITE FAMILIAR

Cal State Fullerton defeated Cal State Northridge on Saturday night for the sixth consecutive time and the 24th time in 26 all-time meetings between the two schools. The Titans have swept the season series from the Matadors in each of Northridge's first three seasons in the Big West Conference, all by a margin of 10 points or less, including a one-point win at the Matadome in the first meeting between the two teams this season.

On the flip side, Thursday's 80-70 loss to Pacific extended Fullerton's losing streak to the Tigers to 13 consecutive games -- the second-longest active losing streak in Titan women's basketball history. Cal State Fullerton has lost 21 straight to UC Santa Barbara.

PROLIFIC SCORERS

Cal State Fullerton has four players who have scored 200 or more points this season, marking the first time since the 1999-2000 campaign that that feat has been accomplished. With three more points this season, sophomore Amber Pruitt would also become the first Titan since Tamara Quinn in 2000-01 to score 300 or more points in a single-season. Should Pruitt reach that mark, and Rochelle Ortega scores 12 more points, Fullerton would have two, 300-point scorers in a single-season for the first time since 1998-99 (Erin Whiteside and Andrea Thieme).

SHOOTING THE LIGHTS OUT

The Titans have found a way to get around the Cal State Northridge defense this season, posting their two-best shooting performances as a team this year in the their two games against the Matadors. Fullerton is a combined 55-for-98 (.561) from the field while Northridge shot just 51-for-141 (.362) in the two meetings. On Saturday, the Titans hit on 54 percent of their shots from the floor against the Matadors, including 69 percent in the second half to spark the comeback. It was the ninth time this season that Cal State Fullerton has shot 40 percent or better from the floor, posting a 6-3 records in those contests -- including 3-0 when the Titans shoot 50 percent or better.

THEME FROM S.W.A.T.

Senior center Rochelle Ortega is singing a new tune this week, after notching the 61st and 62nd blocked shots of her career with two each against Pacific and Cal State Northridge. The total moved her closer to the No. 4 spot on the school's all-time blocked shots list, needing just three more to tie Dee Braxton (1995-97), who had 65 blocks in her two seasons with the Titans.

The four blocks this weekend also gave her 23 blocks on the season, putting her in ninth place on the school's single-season charts. Should she get three more, she would also tie Braxton for eighth on that list.

TITANS AT THE BIG WEST CONFERENCE TOURNAMENT

at Long Beach, Calif.			
1985-86	W	Hawaii	76-69
	L	UNLV	80-75
at Long Beach, Calif.			
1986-87	L	UNLV	85-57
at Long Beach, Calif.			
1987-88	W	UC Irvine	62-56
	L	UNLV	61-55
at Long Beach, Calif.			
1988-89	W	San Diego State	68-60
	L	Long Beach State	81-61
at Long Beach, Calif.			
1989-90	L	Fresno State	72-60
at Long Beach, Calif.			
1990-91	W	Fresno State	79-41
	W	New Mexico State	108-80
	L	Long Beach State	71-60
at Long Beach, Calif.			
1991-92	L	UC Santa Barbara	86-59
at Long Beach, Calif.			
1992-93	L	UNLV	98-68
at Las Vegas, Nev.			
1993-94	L	UC Irvine	73-66
at Las Vegas, Nev.			
1994-95	W	San Jose State	91-73
	W	UC Santa Barbara	97-86
	L	UC Irvine	69-67
at Reno, Nev.			
1997-98	L	Nevada	81-45
at Anaheim, Calif.			
2000-01	L	UC Santa Barbara	79-50
at Anaheim, Calif.			
2001-02	L	UC Santa Barbara	73-62
at Anaheim, Calif.			
2002-03	L	UC Santa Barbara	93-58

SERIES RECORDS

Opponent	Record
Fresno State	1-1
Hawaii	1-0
Long Beach State	0-2
Nevada	0-1
New Mexico State	1-0
San Diego State	1-0
San Jose State	1-0
UC Santa Barbara	1-4
UC Irvine	1-2
UNLV	0-4

IT'S RAINING THREE'S

Cal State Fullerton's sharpshooters were in top form on Saturday night, hitting 8-of-15 (.533) from beyond the arc to help key a win over Cal State Northridge. It was the eighth time this season that the Titans have hit eight or more three-pointers in a game, posting a 6-2 record in those games. Fullerton had its best night beyond the arc on Jan. 22 at Utah State, hitting 10-of-17 (.588) to lift the Titans to a victory over the Aggies, 69-68, in Logan, Utah. Cal State Fullerton ranks second behind only Idaho (.674) this week in the Big West statistical standings in three-pointers made per game at 5.44.

FREE POINTS COMING MUCH EASIER

The Titans had spent most of the season near the bottom of the Big West Conference in free throw percentage, but thanks to a solid last couple of weeks at the line, things are looking up for Cal State Fullerton.

The Titans have not shot less than 70 percent from the line in each of their last six games, including hitting 93 percent (13-for-14) in a loss to Cal Poly on Feb. 28. Fullerton is a combined 75-for-96 in those six contests, shooting .781 in that span, and propelling the Titans to No. 5 in the conference this week at .685 for the season.

In conference games, that number gets even better as Fullerton ranks second in the league with a 75 percent success rate at the charity stripe, standing behind only UC Riverside, which is at 82.2 percent in 18 games.

UNDERWOOD HITS THE JACKPOT... SORT OF

In Vegas, if you see "7-7-7" come up on a slot machine, it's usually cause for celebration. Saturday night was no different for Charlee Underwood and the Titans. Underwood must have had Lady Luck on her side as her final line listed her as scoring seven points, grabbing seven rebounds, and dishing out seven assists, in Fullerton's eight-point victory over Northridge. A million dollars... a basketball victory... it's all the same, right?

IRON WOMAN

Move over Cal Ripken, Jr., it's Rochelle Ortega's turn.

The senior from Fresno, Calif., has become the Titans' "Iron Woman" over the last two seasons, starting Cal State Fullerton's last 47 consecutive games since playing in only one minute off the bench in the Titans' victory over San Diego on Dec. 14, 2002.

She is the lone Titan to start all 27 games this season and, at 29.5 mpg this year, trails only Tamara Quinn in minutes played (874 to 797) and minutes per game (33.6 to 29.5) on the team. Quinn, who had started the first 24 contests of this season, missed Monday's game at UC Santa Barbara due to a thumb injury, to snap her streak. However, the 26 games started by Quinn are a career-high, surpassing the 20 games she started as a freshman.

REVERSAL OF FORTUNE

On Feb. 21, the Titans shot 34 percent in a win over Utah State, marking the first time in seven games that Fullerton had shot under 35 percent and won. The next week was a different story. The UC Santa Barbara defense held the Titans to just 21.7 percent (13-for-60) shooting from the floor for the game, marking the second-lowest single-game field goal percentage this season (.186 vs. Fordham). In fact, the .217 against the Gauchos is the third-lowest single-game total for the Titans dating back to the 1993-94 campaign, narrowly edging the .218 shot in a loss to Arizona State in 1995. The .186 shot against Fordham is the lowest single-game percentage in the last 10 years.

BORN (TO HIT) FREE (THROWS)

Give Tamara Quinn a chance at free points and chances are she'll cash in.

Quinn has converted on 36 of her last 40 free throw attempts (.900) over her last 15 games, including an 8-for-8 performance at the charity stripe on Jan. 10 against UC Riverside and a 6-for-6 outing against Utah State on Saturday night.

In her career, she is 222-for-306 (.725) which would put her in fourth place all-time in Cal State Fullerton history should the season end today. She also ranks ninth in career free throws made and 10th in career attempts.

This week, Quinn ranks fifth in the Big West Conference this season in free throw percentage at .821 and is one of eight players in the league shooting 80 percent or better from the line entering the week.

That total would be the second-highest single-season percentage in the history of Fullerton women's basketball, should the season end today, trailing only Shayla Bradshaw's percentage of .833 set during the 1995-96 season.

TITANS PICKED NINTH IN PRESEASON POLLS

The Cal State Fullerton women's basketball team was picked to finish in ninth place in the Big West Conference in 2003-04 according to a poll of the conference's coaches and media at the league's annual basketball media day in Irvine, Calif., on Nov. 5.

The Titans received 23 points from the coaches to finish eight points ahead of 10th-place Utah State, which reinstated its program after a 16-year hiatus. The Titans trailed eighth-place Cal Poly by two points and seventh-place Cal State Northridge with five points.

The media gave Cal State Fullerton 51 points, finishing 24 points ahead of the Aggies, and trailing the Matadors by 10 points.

UC Santa Barbara was picked to repeat as conference champs by both groups, receiving nine of the 10 first-place votes from the conference's coaches (coaches were not allowed to vote for their own team) and all 18 first-place votes from media members.

THE BIG WEST CONFERENCE

2003-04 STANDINGS (as of 3/8/04)

	Conference			GB	Overall		
	W	L	Pct.		W	L	Pct.
**UCSB	17	1	.944	--	23	6	.793
**Idaho	13	5	.722	4.0	21	6	.778
**Pacific	13	5	.722	4.0	14	13	.519
**Cal Poly	10	8	.556	7.0	14	13	.519
**Long Beach State	8	10	.444	9.0	12	15	.444
**CS Fullerton	8	10	.444	9.0	8	19	.296
**UC Riverside	6	12	.333	11.0	7	20	.259
**Utah State	5	13	.278	12.0	5	21	.192
UC Irvine	5	13	.278	12.0	6	20	.231
CS Northridge	5	13	.278	12.0	6	20	.231

** clinched Big West Conference Tournament berth

2003-04 WEEKLY SCHEDULE

THIS WEEK'S SCHEDULE

Mar. 10	Long Beach State vs. Utah State *CS Fullerton vs. UC Riverside	Noon 30 min.
Mar. 11	Pacific vs. Lowest Seed Remaining *Cal Poly vs. Highest Seed Remaining	Noon 30 min.
Mar. 12	UCSB vs. Lowest Seed Remaining *Idaho vs. Highest Seed Remaining	Noon 30 min.
Mar. 13	Championship Game FOX Sports Net	1 p.m.

* game will tip off 30 minutes following the end of the first game

LAST WEEK'S RESULTS

Thu. 4	Cal State Northridge 75, UC Riverside 66 * Pacific 80, Cal State Fullerton 70 * Cal Poly 64, Long Beach State 56 * UC Santa Barbara 77, UC Irvine 59 *
Fri. 5	Idaho 80, Utah State 65 *
Sat. 6	UC Santa Barbara 66, Long Beach State 49 * Pacific 72, UC Riverside 68 * Cal Poly 78, UC Irvine 71 * Cal State Fullerton 73, Cal State Northridge 65 *

2003-04 BIG WEST PLAYERS OF THE WEEK

Date	Player	School	Year
Nov. 24	Katy Paterson	Cal Poly	Jr.
Dec. 1	Lindsay Taylor	UCSB	Sr.
Dec. 8	Crystal McCutcheon	Long Beach St.	So.
Dec. 15	Leilani Mitchell	Idaho	Fr.
Dec. 22	Lindsay Taylor	UCSB	Sr.
Dec. 29	NO PLAYER NOMINATED		
Jan. 6	Emily Faurholdt	Idaho	So.
Jan. 12	Heather Thoeke	Idaho	Jr.
Jan. 19	Jayne Connors	Long Beach St.	So.
Jan. 26	Tamara Quinn	CS Fullerton	Sr.
Feb. 2	Kristen Mann	UCSB	Jr.
Feb. 9	Lindsay Taylor	UCSB	Sr.
Feb. 16	Christina Callaway	UCI	Sr.
Feb. 23	Emily Faurholt	Idaho	So.
Mar. 1	Katy Paterson	Cal Poly	Jr.
Mar. 8	Amber Pruitt	CS Fullerton	So.

2003-04 COACHES/MEDIA PRESEASON POLLS

Coaches	Media
1. UCSB (9)	UCSB (18)
2. Pacific	Pacific
3. Long Beach State (1)	Long Beach State
4. UC Irvine	UC Irvine
5. Idaho	UC Riverside
6. UC Riverside	Cal Poly
7. Cal State Northridge	Idaho
8. Cal Poly	Cal State Northridge
9. Cal State Fullerton	Cal State Fullerton
10. Utah State	Utah State

A QUICK LOOK AT UC RIVERSIDE

UC Riverside enters the tournament as the No. 7 seed in the Big West, finishing the regular season with a 7-20 overall record and a 6-12 mark in Big West play, two games back of Cal State Fullerton and Long Beach State in the standings. The Highlanders finished their season on a sour note, losing their last five straight contests – four of those coming against the tournament's top four seeds. UCR is led offensively by Cassandra Reeves, who is averaging 17.3 ppg and 3.1 rpg on the season while shooting .375 from the floor and hoisting up 143 three-point attempts on the season. Crystal Harris is also in double figures, averaging 15.1 ppg and 5.0 rpg, while Jodi Reber leads the team at 6.0 rpg to go with 9.7 ppg.

THE SERIES

Cal State Fullerton leads the all-time series with UC Riverside, 13-8, splitting the two meetings this season... The Titans' victory in the opener snapped a six-game losing streak to the Highlanders... Fullerton is 5-3 against the Highlanders at Titan Gym, 4-4 on the road, and 0-1 at a neutral site.

CAL STATE FULLERTON 68, UC RIVERSIDE 56

Jan. 10, 2004 – Fullerton, Calif.

Cal State Fullerton narrowly missed a school single-game record with 11 three-pointers and senior Tamara Quinn led all scorers with 24 points as the host Titans defeated UC Riverside, 68-56, in a Big West Conference women's basketball match-up on Saturday night at Titan Gym.

Half of the Titans' made baskets on the night came from beyond the arc as they hit 11-of-27 (.407) from three-point range and 22-of-57 (.386) overall. The school single-game record for three-pointers made is 13 set against Nevada on Feb. 26, 1994.

Quinn missed equalling her career high in scoring by a single point and added four rebounds and a career-high six assists. Quinn was also 8-for-8 from the free throw line, moving into 10th place on the school's career list for free throws made in the process.

Fullerton jumped out to a quick 12-2 advantage to open the game as five of its first nine made baskets were three-pointers, setting the tone for the entire night. However, the Highlanders responded with a 12-0 run, capped by a three-pointer by Jennifer Valdez that gave UCR its first lead at 14-12 with just under 12 minutes to play.

The Highlanders led by as many as three points in the first half with 3:16 to play before the Titans rattled off a 6-0 run to close out the period and taking a 29-26 lead into the lockerroom at the break.

In the second half, Fullerton scored the first five points to increase its lead to eight, but the Highlanders battled back to tie the game at 34-34 thanks to eight unanswered points with just under four minutes gone in the half.

The two teams traded baskets, with the Titans holding no more than a seven-point advantage on two occasions and UCR getting no closer than five points three times. Leading by five with 8:23 to go, Fullerton let loose for an 11-2 run, upping its lead to 14 points with 3:37 to go and the Titans never looked back.

UC Riverside, playing without leading scorer Cassandra Reeves, who is out due to injury, had three players in double figures led by Crystal Harris' 14 points. LaKeima Stephens had 11 points and nine rebounds, while Kristin Peters came off the bench to tally 13 points in the loss.

Despite the loss, the Highlanders outshot the Titans, hitting on 20-of-49 (.408) from the field for the game, and edged Fullerton on the boards, 34-33.

UC RIVERSIDE 67, CAL STATE FULLERTON 63

Feb. 7, 2004 – Riverside, Calif.

UC Riverside's Casandra Reeves hit the game-winning basket with :37 seconds remaining and scored a game-high 26 points to lead the Highlanders to a 67-63 victory over visiting Cal State Fullerton on Saturday night at the Student Recreation Center.

Fullerton had battled back from a nine-point deficit in the second half, tying the score on a lay-up by junior Melanie Mosley with 1:52 to play. Reeves missed a lay-up on UCR's next possession and Crystal Harris stole the ball back for the Highlanders on the Titans' ensuing trip down court.

Reeves got the ball at the top of the key dribbled to the free throw line extended and hit on an 8-foot jumper to give Riverside the 64-62 advantage.

Sophomore Amber Pruitt hit 1-of-2 from the line to bring the Titans to within a point, and trailed by only two points with :17 remaining when Holly Peterson missed 1-of-2 from the line. However, Cal State Fullerton missed on two chances to tie things up, failing on back-to-back attempts with :08 remaining. Kirsten Muir hit two free throws with :02 left on the clock to ice the victory.

Reeves' 26 points came on 9-of-24 shooting as she played all 40 minutes of the game. Harris and Jodi Reber joined her in double figures with 13 and 10 points, respectively.

The Titans were led by Mosley's career-high 12 points and Amber Pruitt's double-double (12 points, 10 rebounds). Senior Rochelle Ortega was also in double figures with 10 points, six rebounds and a pair of blocks. Fullerton's leading scorer, Tamara Quinn, was held without a field goal attempt for all of the first half and the first 3:46 of the second period. Her only two points came on free throws with 2:31 left in the game and she finished 0-for-7 from the field.

RECORD-BREAKING TAMARA QUINN

#12

Titan senior Tamara Quinn became the 14th player in Cal State Fullerton women's basketball history to reach the 1,000-point plateau, eclipsing the mark on a three-pointer with 2:32 remaining in Thursday's game against Cal Poly. She currently ranks No. 12 all-time on the school's scoring list. Here is where she stands among career leaders as of March 8, 2004...



Category	Rank	Total	Next on the list...	Category	Rank	Total	Next on the list...
Scoring	12th	1,079	Jill Maiyuch (1,097)	3PA	3rd	417	Joey Ray (422)
FTM	9th	222	Amy Torczon (231)	3PT Pct.	7th	.305	Andrea Thieme (.309)
FTA	10th	306	Terri Withers (359)	Steals	--	133	Eugenia Rycraw & Terri Withers (138)
FT Pct.	4th	.725	Nancy Ratliff (.758)				
3PM	4th	127	Joey Ray (136)				

2003-04 QUICK FACTS

GENERAL INFORMATION

Address: 800 N. State College Blvd.
 Fullerton, Calif., 92834
 Founded 1957
 Enrollment 32,143
 Nickname Titans
 Home Court Titan Gym (3,500)
 Colors Navy Blue, Orange, and White
 President Dr. Milton A. Gordon
 Athletics Director Brian Quinn
 SWA Dr. June Kearney

SPORTS INFORMATION

Director Mel Franks
 Asst. Director Ryan Ermeling
 Asst. Director (Women's Basketball) Jason Spencer
 • Office Phone (714) 278-7547
 • Office Fax (714) 278-3141
 • Home Phone (213) 625-5038
 • Cell Phone (714) 904-7547
 • E-Mail jspencer@fullerton.edu
 • Website www.titansports.org
 • Press Row Phone (714) 278-5700

COACHING STAFF

Head Coach Dr. Maryalyce Jeremiah
 Alma Mater Cedarville University '65
 Overall Record 375-238 (23 yrs.)
 *School Record 112-93 (7 yrs.)
 Assistant Coach Marcia Foster (1st Year)
 Alma Mater Seton Hall '84
 Assistant Coach Barb Bausch (1st Year)
 Alma Mater Cal State Fullerton '87
 Assistant Coach Eugenia Rycraw (1st Year)
 Alma Mater Cal State Fullerton '94

* record is from her first stint as head coach at Cal State Fullerton (1985-86 to 1991-92)

KEY NUMBERS

2002-03 Record 7-21
 2002-03 Big West Record 5-11 (7th Place)
 Postseason None
 Starters Returning/Lost 3/2
 Letterwinners Returning/Lost 11/3
 Newcomers 4

TOP RETURNERS

Rochelle Ortega, Sr., C (9.0 ppg, 5.8 rpg, 21 blks)
 Tamara Quinn, Sr., G (9.0 ppg, 34 stls, .394 3P%)
 Andrea Adams, So., G (BWC All-Frosh, 6.5 ppg, 21 stl)
 Audrey Taylor, So., G (5.1 ppg, 2.8 rpg, 36 stls)

KEY LOSSES

Heather Hansen (BWC HM, 9.3 ppg, 6.2 rpg, 22 blks)
 Allyson Alhadeff (4.8 ppg, 2.1 rpg)

PROGRAM HISTORY

All-Time Record 436-451 (.499) - 34 Yrs
 All-Time BWC Record 114-186 (.380) - 18 Yrs
 All-Time Home Record 184-187 (.496)
 All-Time Road Record 129-189 (.406)
 All-Time Neutral Record 71-64 (.526)
 Big West Titles None
 NCAA Tournament Berths 1988-89
 1990-91

NCAA Tournament Results:

1988-89 at Montana (L, 82-67) - 1st Round
 1990-91 vs. Louisiana Tech (W, 84-80) - 1st Round
 1990-91 at Stanford (L, 91-67) - 2nd Round

WNIT Berths 1984-85 (Amarillo, Tex.)

WNIT Results:

vs. Texas Tech (L, 71-68) - 1st Round
 vs. West Virginia (W, 75-71)
 vs. West Texas State (W, 71-64)

2003-04 ALPHABETICAL ROSTER

NO	NAME	POS	HT	YR	EXP	HOMETOWN (PREVIOUS SCHOOL)
#10	Andrea Adams	G	5-6	So.	1V	Lynwood, Calif. (Lynwood HS)
#32	Ariel Adams	G/F	6-0	Fr.	HS	Norwalk, Calif. (Troy HS)
#20	Catherine Holman	C	6-2	Jr.	2V	Menlo Park, Calif. (Sacred Heart Prep)
#15	Meghann Keathley	G	5-5	Jr.	2V	Danville, Calif. (Carondelet HS)
#21	Nikki Lee	F	5-10	Sr.	3V	Huntington Beach, Calif. (Marina HS)
#22	India McDaniel	G	5-7	Fr.	HS	Sacramento, Calif. (Laguna Creek HS)
#11	Tessa Moon	G/F	5-8	So.	1V	San Francisco, Calif. (Sacred Heart Cathedral Prep)
#44	Melanie Mosley	G/F	5-11	Jr.	2V	Hawthorne, Calif. (St. Bernard HS)
#33	Rochelle Ortega	C	6-2	Sr.	2V	Fresno, Calif. (Fresno City College)
#00	Amber Pruiitt	F	6-1	So.	1V	Carson, Calif. (Narbonne HS)
#52	Tamara Quinn	G	5-7	Sr.	3V	Lomita, Calif. (Bishop Montgomery HS)
#4	Cynthia Sorrell	F/C	6-1	Jr.	TR	Oceanside, Calif. (Palomar College)
#14	Audrey Taylor	G	5-5	So.	1V	Watts, Calif. (Lynwood HS)
#23	Charlee Underwood	G	5-10	Fr.	HS	San Francisco, Calif. (French-American Int'l School)
#25	Jaime Wagner	G/F	5-9	Sr.	1V	Fernley, Nev. (Lassen Community Coll.)

2003-04 NUMERICAL ROSTER

NO	NAME	POS	HT	YR	EXP	HOMETOWN (PREVIOUS SCHOOL)
#00	Amber Pruiitt	F	6-1	So.	1V	Carson, Calif. (Narbonne HS)
#4	Cynthia Sorrell	F/C	6-1	Jr.	TR	Oceanside, Calif. (Palomar College)
#10	Andrea Adams	G	5-6	So.	1V	Lynwood, Calif. (Lynwood HS)
#11	Tessa Moon	G/F	5-8	So.	1V	San Francisco, Calif. (Sacred Heart Cathedral Prep)
#14	Audrey Taylor	G	5-5	So.	1V	Watts, Calif. (Lynwood HS)
#15	Meghann Keathley	G	5-5	Jr.	2V	Danville, Calif. (Carondelet HS)
#20	Catherine Holman	C	6-2	Jr.	2V	Menlo Park, Calif. (Sacred Heart Prep)
#21	Nikki Lee	F	5-10	Sr.	3V	Huntington Beach, Calif. (Marina HS)
#22	India McDaniel	G	5-7	Fr.	HS	Sacramento, Calif. (Laguna Creek HS)
#23	Charlee Underwood	G	5-10	Fr.	HS	San Francisco, Calif. (French-American Int'l School)
#25	Jaime Wagner	G/F	5-9	Sr.	1V	Fernley, Nev. (Lassen Community Coll.)
#32	Ariel Adams	G/F	6-0	Fr.	HS	Norwalk, Calif. (Troy HS)
#33	Rochelle Ortega	C	6-2	Sr.	2V	Fresno, Calif. (Fresno City College)
#44	Melanie Mosley	G/F	5-11	Jr.	2V	Hawthorne, Calif. (St. Bernard HS)
#52	Tamara Quinn	G	5-7	Sr.	3V	Lomita, Calif. (Bishop Montgomery HS)

Head Coach: Dr. Maryalyce Jeremiah (Cedarville University '65) – 8th Season, 24th Overall

Assistant Coach: Marcia Foster (Seton Hall '84) – 1st Season

Assistant Coach: Barb Bausch (Cal State Fullerton '87) – 1st Season

Assistant Coach: Eugenia Rycraw (Cal State Fullerton '94) – 2nd Season

PRONUNCIATION GUIDE

#00 Amber Pruiitt Amber PREW-it
 #3 Charlee Underwood CHARLIE Underwood
 #4 Cynthia Sorrell Cynthia Soar-ELL
 #10 Andrea Adams ANN-dree-uh Adams
 #15 Meghann Keathley Megan KEETH-lee
 #33 Rochelle Ortega ROW-shell OreTAY-guh
 #52 Tamara Quinn TAM-uh-ruh Quinn
 Barb Bausch Barb BOWsch
 Eugenia Rycraw You-GENE-ee-uh RYE-craw

MISCELLANEOUS FACTS

Seniors 4
 Juniors 4
 Sophomores 4
 Freshmen 3
 Transfers 1
 Tallest Catherine Holman & Rochelle Ortega (6-2)
 Shortest Audrey Taylor & Meghann Keathley (5-5)
 Furthest from Home Jaime Wagner (577.10 miles)
 Closest to Home Ariel Adams (11.09 miles)

IN-SEASON BIRTHDAYS

Jaime Wagner – Oct. 2, 1980
 Tessa Moon – Feb. 15, 1984
 Charlee Underwood – March 7, 1985

CAL STATE FULLERTON CAREER & SEASON HIGHS (AS OF MAR. 8, 2004)

AMBER PRUITT

	POINTS	REBOUNDS	ASSISTS	BLOCKS	STEALS
CAREER	29 (vs. Pacific, 3/4/04)	11 (3x, last at CSUN, 1/3/04)	4 (vs. CSUN, 3/6/04)	2 (2x, last vs. CSUN, 3/6/04)	5 (at LBSU, 2/13/03)
2003-04	29 (vs. Pacific, 3/4/04)	11 (2x, last at CSUN, 1/3/04)	4 (vs. CSUN, 3/6/04)	2 (2x, last vs. CSUN, 3/6/04)	3 (at UCSB, 3/1/04)

CYNTHIA SORRELL

	POINTS	REBOUNDS	ASSISTS	BLOCKS	STEALS
CAREER	10 (at Kansas, 12/6/03)	8 (vs. Fordham, 11/21/03)	1 (2x, last vs. CSUN, 3/6/04)	2 (vs. Cal Poly, 1/29/04)	2 (vs. Idaho, 2/19/04)
2003-04	10 (at Kansas, 12/6/03)	8 (vs. Fordham, 11/21/03)	1 (3x, last vs. CSUN, 3/6/04)	2 (vs. Cal Poly, 1/29/04)	2 (vs. Idaho, 2/19/04)

ANDREA ADAMS

	POINTS	REBOUNDS	ASSISTS	BLOCKS	STEALS
CAREER	19 (vs. Cal Poly, 1/2/03)	5 (vs. LBSU, 2/6/03)	7 (vs. Cal Poly, 1/2/03)	1 (at Cal Poly, 3/8/03)	3 (2x, last at Idaho, 2/22/03)
2003-04	0	0	0	0	0

TESSA MOON

	POINTS	REBOUNDS	ASSISTS	BLOCKS	STEALS
CAREER	16 (vs. Fordham, 11/21/03)	5 (3x, last at UNM, 11/25/03)	3 (2x, last vs. UNLV, 12/13/03)	1 (4x, last at LBSU, 2/14/04)	2 (2x, last vs. SDSU, 12/11/03)
2003-04	16 (vs. Fordham, 11/21/03)	5 (3x, last at UNM, 11/25/03)	3 (2x, last vs. UNLV, 12/13/03)	1 (4x, last at LBSU, 2/14/04)	2 (2x, last vs. SDSU, 12/11/03)

AUDREY TAYLOR

	POINTS	REBOUNDS	ASSISTS	BLOCKS	STEALS
CAREER	16 (vs. Pacific, 2/27/03)	5 (at Pacific, 2/1/03)	8 (vs. LBSU, 2/6/03)	1 (2x, last at LBSU, 2/13/03)	4 (3x, last at CSUN, 1/3/04)
2003-04	2 (2x, last at Pacific, 1/5/04)	3 (at CSUN, 1/3/04)	3 (at CSUN, 1/3/04)	0	4 (at CSUN, 1/3/04)

MEGHANN KEATHLEY

	POINTS	REBOUNDS	ASSISTS	BLOCKS	STEALS
CAREER	17 (at Utah State, 1/22/04)	5 (vs. Fordham, 11/21/03)	9 (at So. Utah, 12/7/02)	1 (2x, last vs. Cal Poly, 1/29/04)	4 (vs. Cal Poly, 1/29/04)
2003-04	17 (at Utah State, 1/22/04)	5 (vs. Fordham, 11/21/03)	8 (vs. Cal Poly, 1/29/04)	1 (vs. Cal Poly, 1/29/04)	4 (vs. Cal Poly, 1/29/04)

CATHERINE HOLMAN

	POINTS	REBOUNDS	ASSISTS	BLOCKS	STEALS
CAREER	16 (at EWU, 12/6/01)	9 (2x, last vs. UNLV, 12/13/03)	3 (at UNLV, 11/16/01)	1 (4x, last vs. UCI, 1/17/04)	2 (4x, last vs. UCR, 1/10/04)
2003-04	10 (vs. UNLV, 12/13/03)	9 (vs. UNLV, 12/13/03)	1 (6x, last vs. USU, 2/21/04)	1 (vs. UCI, 1/17/04)	2 (vs. UCR, 1/10/04)

NIKKI LEE

	POINTS	REBOUNDS	ASSISTS	BLOCKS	STEALS
CAREER	18 (vs. Columbia, 12/30/00)	9 (vs. Air Force, 11/19/01)	3 (at LMU, 12/2/02)	1 (11x, last at Cal Poly, 3/8/03)	2 (2x, last vs. UCSB, 1/31/04)
2003-04	2 (2x, last at Utah St., 1/22/04)	2 (vs. Idaho St., 12/31/03)	2 (vs. BYU, 12/9/03)	0	2 (vs. UCSB, 1/31/04)

INDIA MCDANIEL

	POINTS	REBOUNDS	ASSISTS	BLOCKS	STEALS
CAREER	7 (vs. Fresno St., 12/19/03)	3 (4x, last at UCR, 2/7/04)	6 (vs. SDSU, 12/1/03)	1 (2x, last at LBSU, 2/14/04)	2 (at Idaho, 1/24/04)
2003-04	7 (vs. Fresno St., 12/19/03)	3 (4x, last at UCR, 2/7/04)	6 (vs. SDSU, 12/1/03)	1 (3x, last at LBSU, 2/14/04)	2 (at Idaho, 1/24/04)

CHARLEE UNDERWOOD

	POINTS	REBOUNDS	ASSISTS	BLOCKS	STEALS
CAREER	23 (vs. Idaho, 2/19/04)	10 (vs. UCR, 1/10/04)	7 (vs. CSUN, 3/6/04)	1 (3x, last vs. CSUN, 3/6/04)	4 (2x, last at UCR, 2/7/04)
2003-04	23 (vs. Idaho, 2/19/04)	10 (vs. UCR, 1/10/04)	7 (vs. CSUN, 3/6/04)	1 (3x, last vs. CSUN, 3/6/04)	4 (2x, last at UCR, 2/7/04)

JAIME WAGNER

	POINTS	REBOUNDS	ASSISTS	BLOCKS	STEALS
CAREER	12 (at Utah State, 1/22/04)	3 (3x, last vs. Idaho, 2/19/04)	4 (at Utah State, 1/22/04)	1 (vs. CSUN, 3/4/04)	2 (vs. Gonzaga, 12/31/02)
2003-04	12 (at Utah State, 1/22/04)	3 (3x, last vs. Idaho, 2/19/04)	4 (at Utah State, 1/22/04)	1 (vs. CSUN, 3/4/04)	1 (3x, last at UCR, 2/7/04)

DRENDA ADAMS

	POINTS	REBOUNDS	ASSISTS	BLOCKS	STEALS
CAREER	0	0	0	0	0
2003-04	0	0	0	0	0

ARIEL ADAMS

	POINTS	REBOUNDS	ASSISTS	BLOCKS	STEALS
CAREER	2 (4x, last at UCSB, 3/1/04)	4 (vs. UCSB, 1/31/04)	1 (vs. Cal Poly, 1/29/04)	1 (vs. Alabama St., 12/7/03)	1 (5x, last vs. PAC, 3/4/04)
2003-04	2 (4x, last at UCSB, 3/1/04)	4 (vs. UCSB, 1/31/04)	1 (vs. Cal Poly, 1/29/04)	1 (vs. Alabama St., 12/7/03)	1 (5x, last vs. PAC, 3/4/04)

ROCHELLE ORTEGA

	POINTS	REBOUNDS	ASSISTS	BLOCKS	STEALS
CAREER	23 (at Cal Poly, 2/28/04)	15 (vs. Idaho, 1/23/03)	4 (3x, last vs. Idaho, 2/19/04)	3 (3x, last vs. UCR, 1/10/04)	3 (2x, last vs. PAC, 3/4/04)
2003-04	23 (at Cal Poly, 2/28/04)	13 (at Cal Poly, 2/28/04)	4 (3x, last vs. Idaho, 2/19/04)	3 (vs. UCR, 1/10/04)	3 (vs. Pacific, 3/4/04)

MELANIE MOSLEY

	POINTS	REBOUNDS	ASSISTS	BLOCKS	STEALS
CAREER	12 (at UCR, 2/7/04)	6 (2x, last vs. CSUN, 3/6/04)	2 (at Utah State, 1/22/04)	1 (3x, last at LBSU, 2/14/04)	2 (2x, last vs. UCSB, 1/4/03)
2003-04	12 (at UCR, 2/7/04)	6 (2x, last vs. CSUN, 3/6/04)	2 (at Utah State, 1/22/04)	1 (at LBSU, 2/14/04)	1 (4x, last vs. PAC, 3/4/04)

TAMARA QUINN

	POINTS	REBOUNDS	ASSISTS	BLOCKS	STEALS
CAREER	25 (at SJSU, 12/21/01)	10 (2x, last at Pacific, 1/5/04)	7 (2x, last at CP, 2/28/04)	2 (vs. LBSU, 1/15/04)	5 (vs. Air Force, 12/21/01)
2003-04	24 (2x, last vs. CP, 1/29/04)	10 (at Pacific, 1/5/04)	7 (2x, last at CP, 2/28/04)	2 (vs. LBSU, 1/15/04)	4 (at Idaho, 1/24/04)

GAME-BY-GAME STATISTICS (POINTS-REBOUNDS-ASSISTS)

Opp.	#00	#4	#10	#11	#14	#15	#20	#21	#22	#23	#25	#30	#32	#33	#44	#52
FORD	10-7-0	1-8-0	DND	16-5-0	DND	3-5-5	0-1-0	0-0-0	0-3-0	0-0-0	0-0-1	DNP	0-0-0	2-2-1	6-2-0	5-1-1
at UNM	14-10-2	0-2-0	DNT	9-5-3	DND	5-2-6	DNP	0-1-0	1-3-2	3-1-0	DNP	DNP	DNP	4-1-0	4-5-0	12-2-0
SDSU	17-9-1	4-0-0	DND	6-2-1	DND	0-0-0	DNP	0-0-1	4-2-6	8-2-1	0-0-0	DND	2-2-0	2-6-1	2-0-1	5-1-1
at KAN	4-6-0	10-1-0	DNT	9-1-0	DND	3-2-1	2-2-1	0-0-1	0-1-0	10-2-4	0-0-0	DND	0-1-0	4-4-0	0-1-0	4-4-2
vs. ALAST	10-5-0	0-1-0	DNT	7-3-0	DND	7-2-5	0-1-0	DNP	2-1-1	5-2-0	8-2-1	DND	0-1-0	12-11-3	DNP	12-6-5
BYU	15-11-0	0-0-0	DND	0-0-1	DND	0-1-1	6-1-1	0-0-2	0-1-2	9-3-1	0-0-2	DND	0-0-0	14-12-1	DND	7-2-1
UNLV	7-6-1	0-0-0	DND	2-0-3	DND	0-0-2	10-9-1	DNP	3-2-0	15-4-1	3-0-0	DND	2-1-0	9-8-1	DND	8-3-2
FSU	20-9-0	DNP	DND	5-1-1	DND	2-1-5	6-4-0	DNP	7-1-0	3-3-1	DND	DND	0-1-0	3-4-4	DND	7-2-3
ISU	7-4-0	4-3-0	DND	0-1-0	1-1-0	3-1-0	1-2-0	2-2-1	2-2-0	6-2-2	DND	DND	DND	15-9-2	DND	17-2-2
at CSN	8-11-0	4-1-0	DND	4-0-0	2-3-3	13-1-7	0-1-0	DNP	DNP	6-2-0	0-0-0	DND	DNP	14-5-3	DND	15-7-3
at PAC	19-10-0	0-0-0	DND	DNP	2-1-0	2-0-3	4-0-1	DNP	0-0-0	12-3-4	0-1-1	DNP	DNP	5-11-1	DND	20-10-3
UCR	4-1-0	0-0-0	DND	7-2-1	DND	8-1-4	0-3-1	DNP	0-2-2	12-10-1	3-0-0	DND	DND	10-6-2	0-1-0	24-4-6
LBSU	10-2-1	2-0-0	DND	0-0-1	DND	8-1-7	6-2-1	DNP	2-1-2	6-6-3	0-0-0	DND	DND	16-5-1	0-2-0	15-7-3
UCI	10-7-0	5-1-0	DND	0-1-0	DND	3-0-3	4-2-1	DNP	5-2-2	7-3-0	9-3-2	DND	DNP	7-5-2	0-1-0	7-2-4
at USU	9-2-1	4-3-1	DNT	DNT	DNT	17-1-4	4-3-0	2-0-0	4-3-1	3-0-1	12-1-4	DNT	DNP	5-6-0	2-1-2	7-7-4
at IDA	2-2-0	8-4-1	DNT	DNP	DNT	10-2-4	6-3-0	DNP	2-0-1	5-3-1	3-3-2	DNT	DNP	10-5-0	0-1-0	22-5-7
CP	10-5-0	8-5-0	DND	0-0-0	DND	7-0-8	4-1-0	DNP	3-1-0	11-1-3	6-2-0	DND	0-0-1	10-2-3	DNP	24-9-4
UCSB	2-5-0	8-2-0	DND	4-0-0	DND	2-0-0	0-2-0	0-0-0	1-1-0	15-5-1	0-0-1	DND	0-4-0	4-4-1	0-1-1	12-4-4
at UCR	12-10-1	6-5-0	DNT	2-1-0	DNT	8-0-1	0-0-0	DNP	1-3-2	7-4-2	3-1-0	DNT	DNP	10-6-4	12-1-0	2-3-2
at UCI	12-9-1	DNP	DND	0-0-0	DNT	6-0-2	2-0-0	DNP	0-1-0	18-4-3	DNP	DND	0-0-0	4-8-1	0-3-0	17-6-3
at LBSU	4-0-0	0-1-0	DND	4-2-1	DNT	0-2-1	0-5-0	1-0-0	2-1-1	13-6-1	DNP	DND	2-3-0	7-3-1	2-1-1	8-3-2
IDA	15-7-1	4-4-1	DND	0-0-1	DND	2-3-0	2-1-0	DNP	0-0-0	23-4-0	6-3-3	DND	DNP	10-4-4	0-0-0	7-8-6
USU	10-3-0	0-4-0	DND	0-0-0	DND	9-2-6	4-0-1	DNP	1-0-0	17-9-0	0-0-0	DND	0-0-0	17-5-2	0-0-0	13-9-6
at CP	4-1-0	2-3-2	DND	2-0-0	DNT	4-4-4	0-0-0	2-1-0	4-0-1	15-6-2	0-0-0	DNT	0-1-0	23-13-1	2-2-0	5-2-7
at UCSB	11-7-2	2-5-0	DNT	0-1-0	DNT	7-1-2	DNP	0-0-0	1-0-2	4-4-1	3-0-0	DNT	2-0-0	6-5-0	2-6-0	DNP
PAC	29-8-0	0-0-0	DND	3-2-2	DND	8-1-4	0-0-0	DNP	4-0-1	4-4-3	0-1-0	DND	1-0-0	14-8-2	0-0-0	7-1-2
CSN	22-3-4	4-0-1	DND	0-0-1	DND	10-0-7	0-0-0	DNP	0-2-1	7-7-7	6-0-0	DND	DNP	14-4-0	4-6-1	6-5-3

STARTING LINEUPS BY GAME

Opponent	Point Guard (1)	Shooting Guard (2)	Small Forward (3)	Power Forward (4)	Center (5)	Overall	This Lineup
FORD	Keathley	Quinn	Moon	Pruitt	Ortega	L, 81-43	A (0-1)
UNM	Keathley	Quinn	Moon	Pruitt	Ortega	L, 59-52	A (0-2)
SDSU	McDaniel	Quinn	Moon	Pruitt	Ortega	L, 73-50	B (0-1)
KAN	Keathley	Quinn	Moon	Pruitt	Ortega	L, 90-46	A (0-3)
ALAST	Keathley	Quinn	Wagner	Pruitt	Ortega	L, 65-63	C (0-1)
BYU	Keathley	Quinn	Wagner	Pruitt	Ortega	L, 72-51	C (0-2)
UNLV	Keathley	Quinn	Moon	Pruitt	Ortega	L, 71-59	A (0-4)
FSU	Keathley	Quinn	Underwood	Pruitt	Ortega	L, 71-53	D (0-1)
ISU	McDaniel	Quinn	Underwood	Pruitt	Ortega	L, 74-58	E (0-1)
CSN	Taylor	Keathley	Quinn	Underwood	Ortega	W, 66-65	F (1-0)
PAC	Taylor	Quinn	Underwood	Holman	Ortega	L, 75-64	G (0-1)
UCR	Keathley	Quinn	Underwood	Holman	Ortega	W, 68-56	H (1-0)
LBSU	Keathley	Quinn	Underwood	Holman	Ortega	L, 77-65	H (1-1)
UCI	Keathley	Quinn	Underwood	Holman	Ortega	L, 69-57	H (1-2)
USU	Keathley	Quinn	Underwood	Holman	Ortega	W, 69-68	H (2-2)
IDA	Keathley	Quinn	Underwood	Holman	Ortega	W, 68-65	H (3-2)
CP	Keathley	Quinn	Wagner	Sorrell	Ortega	W, 83-81	I (1-0)
UCSB	Keathley	Quinn	Wagner	Holman	Ortega	L, 67-48	H (3-3)
UCR	Keathley	Quinn	Underwood	Sorrell	Ortega	L, 67-63	J (0-1)
UCI	Keathley	Quinn	Underwood	Pruitt	Ortega	W, 59-50	D (1-1)
LBSU	Keathley	Quinn	Underwood	Pruitt	Ortega	L, 74-43	D (1-2)
IDA	Keathley	Quinn	Underwood	Holman	Ortega	L, 78-69	H (3-4)
USU	Keathley	Quinn	Underwood	Holman	Ortega	W, 71-59	H (4-4)
CP	Keathley	Quinn	Underwood	Mosley	Ortega	L, 89-63	K (0-1)
UCSB	Keathley	Underwood	Moon	Mosley	Ortega	L, 75-38	L (0-1)
PAC	Keathley	Quinn	Underwood	Pruitt	Ortega	L, 80-70	D (1-3)
CSN	Keathley	Quinn	Underwood	Pruitt	Ortega	W, 73-65	D (2-3)

FORDHAM 81
CAL STATE FULLERTON 43

11.21.03 • Titan Gym • Fullerton, Calif.

	1	2	T
Fordham (1-0)	38	43	81
Cal State Fullerton (0-1)	23	20	43

RAMS	FG-A	3P-A	FT-A	R	A	P	M
Price F	1-5	0-0	1-2	13	3	3	22
Ruff C	2-4	0-0	0-0	10	0	4	14
Mack G	6-9	2-5	2-2	3	5	16	26
Williams G	7-12	0-0	1-2	9	3	15	24
Dickinson G	5-13	3-5	3-4	3	0	16	30
Chalmers	1-1	0-0	0-0	0	1	2	4
Fleischer	2-5	0-0	0-0	7	1	4	22
Smith	1-2	0-0	0-0	0	2	2	18
Donnelly	2-3	0-0	0-0	4	2	4	9
Jefferson	0-1	0-0	0-0	1	0	0	3
Johnson	5-9	1-1	0-1	4	1	11	15
Leitao	2-7	0-2	0-1	2	0	4	10
Leary	0-0	0-0	0-0	0	1	0	3
TOTALS	34-71	6-13	7-12	61	19	81	200
	(.479)	(.462)	(.583)				

TITANS	FG-A	3P-A	FT-A	R	A	P	M
Pruitt F	2-9	0-2	6-9	7	0	10	20
Moon F	5-17	1-6	5-7	5	0	16	36
Ortega C	1-6	0-0	0-0	2	1	2	24
Keathley G	1-4	0-2	1-2	5	5	3	32
Quinn G	1-4	1-3	2-2	1	1	5	16
Sorrell	0-5	0-0	1-4	8	0	1	13
Holman	0-0	0-0	0-0	1	0	0	6
Lee	0-0	0-0	0-0	0	0	0	5
McDaniel	0-3	0-1	0-0	3	0	0	7
Underwood	0-5	0-3	0-3	0	0	0	15
Wagner	0-1	0-1	0-0	0	1	0	9
Ar. Adams	0-0	0-0	0-0	0	0	0	2
Mosley	1-5	0-0	4-6	2	0	6	15
TOTALS	11-59	2-18	19-33	37	8	43	200
	(.186)	(.111)	(.576)				

OFFICIALS: Maj Forsberg, Adria Molina, Rick Rodman
TECHNICAL FOULS: None
ATTENDANCE: 151

CAL STATE FULLERTON 46
KANSAS 90

12.6.03 • Allen Fieldhouse • Lawrence, Kan.

	1	2	T
Cal State Fullerton (0-4)	16	30	46
Kansas (2-2)	29	61	90

TITANS	FG-A	3P-A	FT-A	R	A	P	M
Pruitt F	2-6	0-0	0-0	6	0	4	14
Moon F	4-14	1-3	0-2	1	0	9	25
Ortega C	2-4	0-0	0-0	4	0	4	22
Keathley G	1-4	1-4	0-0	2	1	3	30
Quinn G	2-6	0-1	0-0	4	2	4	26
Sorrell	5-8	0-0	0-1	1	0	10	10
Holman	1-1	0-0	0-0	2	1	2	26
Lee	0-0	0-0	0-0	0	1	0	5
McDaniel	0-3	0-1	0-0	1	0	0	10
Underwood	5-15	0-4	0-2	2	4	10	20
Wagner	0-0	0-0	0-0	0	0	0	4
Ar. Adams	0-1	0-0	0-0	1	0	0	4
Mosley	0-1	0-0	0-0	1	0	0	4
TOTALS	22-63	2-13	0-5	27	9	46	200
	(.349)	(.154)	(.000)				

KANSAS	FG-A	3P-A	FT-A	R	A	P	M
Ransburg F	1-3	0-0	3-4	4	1	5	22
Kemp C	9-12	0-0	5-6	5	3	23	22
Brown G	4-6	1-3	0-0	2	2	9	18
Burras G	3-6	0-1	3-3	2	3	9	23
Graves G	2-6	0-0	0-0	5	5	4	25
Waltz	1-3	0-0	0-0	1	4	2	15
Carman	1-1	0-0	0-0	2	0	2	2
Menguc	0-0	0-0	0-0	1	1	0	13
Hallman	3-5	2-4	0-0	2	1	8	14
Roberts	1-1	0-0	2-2	2	0	4	6
Rhymes	0-0	0-0	0-0	0	2	0	4
Ervin	7-7	0-0	2-2	9	1	16	20
Bonner	4-6	0-0	0-0	1	1	8	16
TOTALS	36-56	3-8	15-17	38	24	90	200
	(.643)	(.375)	(.882)				

OFFICIALS: Greg Small, Ernie Solis, Metta Roberts
TECHNICAL FOULS: None
ATTENDANCE: 561

CAL STATE FULLERTON 52
NEW MEXICO 59

11.25.03 • The Pit • Albuquerque, N.M.

	1	2	T
Cal State Fullerton (0-2)	27	25	52
New Mexico (2-0)	34	25	59

TITANS	FG-A	3P-A	FT-A	R	A	P	M
Pruitt F	5-14	0-2	4-5	10	2	14	32
Moon F	4-12	1-4	0-0	5	3	9	35
Ortega C	2-7	0-0	0-0	1	0	4	22
Keathley G	2-4	1-3	0-0	2	6	5	30
Quinn G	4-9	2-4	2-2	2	0	12	31
Sorrell	0-2	0-0	0-0	2	0	0	7
Lee	0-0	0-0	0-0	1	0	0	4
McDaniel	0-1	0-0	1-2	3	2	1	10
Underwood	1-2	1-1	0-0	1	0	3	10
Mosley	2-5	0-0	0-2	5	0	4	19
TOTALS	20-56	5-14	7-11	39	13	52	200
	(.357)	(.357)	(.636)				

LOBOS	FG-A	3P-A	FT-A	R	A	P	M
Forest F	1-7	0-2	2-3	4	4	4	18
Arndt F	5-12	0-1	2-2	6	2	12	35
Letz G	2-9	1-4	0-0	6	0	5	23
Moore G	6-16	1-7	0-0	8	6	13	38
Briody G	1-4	0-1	0-0	3	1	2	10
Shetters	4-5	0-0	0-0	1	0	8	13
Montgomery	1-6	1-4	0-0	2	0	3	18
Vogt	0-0	0-0	0-0	1	1	0	4
Francis	1-4	0-0	1-2	2	1	3	12
Olude	0-0	0-0	0-0	1	1	0	2
Maddox	2-5	0-0	0-0	3	1	4	12
McLeod	1-2	1-1	2-2	4	0	5	15
TOTALS	24-70	4-20	7-9	47	17	59	200
	(.343)	(.200)	(.778)				

OFFICIALS: Robert Strong, Clark Stevens, Ernest Solis
TECHNICAL FOULS: None
ATTENDANCE: 9,189

ALABAMA STATE 65
CAL STATE FULLERTON 63

12.7.03 • Allen Fieldhouse • Lawrence, Kan.

	1	2	T
Alabama State (2-1)	25	40	65
Cal State Fullerton (0-5)	34	29	63

HORNETS	FG-A	3P-A	FT-A	R	A	P	M
Browning F	1-2	0-0	0-0	2	1	2	14
Kitt F	9-12	0-0	8-10	10	0	26	27
Johnson G	2-13	0-5	1-2	3	6	5	23
Fincher G	7-17	4-12	0-1	4	3	18	33
Coleman G	1-5	0-3	0-0	3	1	2	29
Brown	2-4	2-4	0-0	4	1	6	11
Stevenson	1-2	0-0	0-0	4	4	2	29
Maxwell	0-1	0-1	0-0	0	0	0	2
Thomas	0-3	0-1	2-2	6	0	2	12
Harris	0-0	0-0	0-0	0	0	0	1
Daniels	0-1	0-0	0-0	1	0	0	3
Thomas	0-2	0-0	2-4	4	1	2	16
TOTALS	23-62	6-26	13-19	41	17	65	200
	(.371)	(.231)	(.684)				

TITANS	FG-A	3P-A	FT-A	R	A	P	M
Pruitt F	3-9	0-4	4-6	5	0	10	20
Wagner F	2-4	2-4	2-2	2	1	8	20
Ortega C	4-14	0-0	4-6	11	3	12	37
Keathley G	2-5	1-2	2-2	2	5	7	31
Quinn G	4-8	3-5	1-2	6	5	12	37
Sorrell	0-4	0-0	0-0	1	0	0	13
Moon	3-7	1-1	0-0	3	0	7	21
Holman	0-3	0-0	0-0	1	0	0	4
McDaniel	0-0	0-0	2-2	1	1	2	6
Underwood	2-3	1-1	0-0	2	0	5	6
Ar. Adams	0-0	0-0	0-0	1	0	0	5
TOTALS	20-57	8-14	15-20	41	15	63	200
	(.351)	(.571)	(.750)				

OFFICIALS: Park Van Nest, Lea Morris, Metta Roberts
TECHNICAL FOULS: None
ATTENDANCE: 150

SAN DIEGO STATE 73
CAL STATE FULLERTON 50

12.1.03 • Titan Gym • Fullerton, Calif.

	1	2	T
San Diego State (2-1)	45	28	73
Cal State Fullerton (0-3)	17	33	50

AZTECS	FG-A	3P-A	FT-A	R	A	P	M
Mattson F	1-2	0-1	0-0	3	3	2	23
Dunlap F	3-8	0-0	0-0	4	3	6	16
McCarthy C	2-2	0-0	2-2	6	0	6	24
Fritz G	6-8	5-5	4-5	2	2	21	29
Elliott G	7-11	2-3	1-2	5	3	17	35
Huetfl	3-5	2-4	2-2	0	1	10	22
Strawberry	2-4	0-2	0-0	2	0	4	11
Shaw	0-1	0-0	0-1	0	0	0	5
Lewis	0-0	0-0	0-0	0	0	0	3
Jackson	2-3	0-0	1-2	5	3	5	16
Casey	1-4	0-0	0-0	5	1	2	16
TOTALS	27-48	9-15	10-14	35	16	73	200
	(.562)	(.600)	(.714)				

TITANS	FG-A	3P-A	FT-A	R	A	P	M
Pruitt F	4-10	0-2	9-10	9	1	17	23
Moon F	2-12	0-2	2-2	2	1	6	30
Ortega C	1-8	0-0	0-0	6	1	2	21
McDaniel G	1-3	0-0	2-4	2	6	4	30
Quinn G	2-7	1-5	0-0	1	1	5	21
Sorrell	2-2	0-0	0-0	0	0	4	9
Keathley	0-0	0-0	0-0	0	0	0	4
Lee	0-1	0-0	0-0	0	1	0	11
Underwood	3-7	2-4	0-2	2	1	8	21
Wagner	0-0	0-0	0-0	0	0	0	3
Ar. Adams	1-3	0-0	0-2	2	0	2	17
Mosley	1-2	0-0	0-0	0	1	2	10
TOTALS	17-55	3-13	13-21	30	13	50	200
	(.309)	(.231)	(.619)				

OFFICIALS: Jay Schweitzer, Norma Leibfreid, Mark Penafior
TECHNICAL FOULS: None
ATTENDANCE: 103

BRIGHAM YOUNG 72
CAL STATE FULLERTON 51

12.9.03 • Titan Gym • Fullerton, Calif.

	1	2	T
Brigham Young (5-2)	40	32	72
Cal State Fullerton (0-6)	23	28	51

COUGARS	FG-A	3P-A	FT-A	
----------------	-------------	-------------	-------------	--

UNLV 71
CAL STATE FULLERTON 59

12.13.03 • Titan Gym • Fullerton, Calif.

	1	2	T
UNLV (5-1)	39	32	71
Cal State Fullerton (0-7)	25	34	59

REBELS	FG-A	3P-A	FT-A	R	A	P	M
Hiichens F	7-11	0-0	2-4	7	4	16	28
Henry F	7-8	1-1	4-4	5	1	19	26
McCracklin C	3-10	0-0	8-9	13	1	14	39
Clark G	2-8	0-0	2-3	3	2	6	24
Robinson G	4-8	3-5	2-2	1	4	13	29
Sneed	0-1	0-1	0-0	1	1	0	6
Simmons	0-2	0-1	0-2	1	1	0	14
Pace	0-2	0-1	0-0	0	0	0	6
Lee	0-0	0-0	0-0	2	1	0	2
Burries	0-0	0-0	0-0	0	0	0	3
Strong	0-1	0-0	0-0	0	0	0	8
Coleman	1-2	0-0	1-2	3	1	3	14
Loftus	0-0	0-0	0-0	0	0	0	1
TOTALS	24-53	4-9	19-26	42	16	71	200
	(.453)	(.444)	(.731)				

TITANS	FG-A	3P-A	FT-A	R	A	P	M
Pruitt F	3-11	0-2	1-2	6	1	7	12
Moon F	1-5	0-2	0-0	0	3	2	25
Ortega C	3-8	0-0	3-4	8	1	9	29
Keathley G	0-2	0-1	0-0	0	2	0	12
Quinn G	3-11	2-6	0-2	3	2	8	37
Sorrell	0-0	0-0	0-0	0	0	0	3
Holman	4-6	0-0	2-6	9	1	10	32
McDaniel	1-2	0-1	1-3	2	0	3	10
Underwood	6-12	2-4	1-2	4	1	15	21
Wagner	1-2	1-2	0-0	0	0	3	8
Ar. Adams	1-2	0-0	0-0	1	0	2	11
TOTALS	23-61	5-18	8-19	36	11	59	200
	(.377)	(.278)	(.421)				

OFFICIALS: Henry Eshom, Dwayne Joseph, Anthony Feroah
TECHNICAL FOULS: None
ATTENDANCE: 82

FRESNO STATE 71
CAL STATE FULLERTON 53

12.19.03 • Titan Gym • Fullerton, Calif.

	1	2	T
Fresno State (5-3)	32	39	71
Cal State Fullerton (0-8)	26	27	53

BULLDOGS	FG-A	3P-A	FT-A	R	A	P	M
Moore F	1-1	0-0	1-3	5	5	3	27
Lane F	2-6	0-1	5-5	4	2	9	23
Clark C	5-7	0-0	0-0	11	0	10	26
Sutherland G	2-6	1-4	0-1	5	3	5	27
Mack G	7-11	3-5	2-2	5	2	19	22
Lopez	0-0	0-0	0-0	0	0	0	1
Diggs	2-4	0-0	0-0	1	1	4	18
Selmon	2-3	0-0	2-2	0	0	6	11
Fleming	4-5	1-2	0-1	4	0	9	17
Green	2-3	0-0	2-5	1	1	6	14
Probst	0-3	0-0	0-0	2	0	0	14
TOTALS	27-49	5-12	12-19	40	14	71	200
	(.551)	(.417)	(.632)				

TITANS	FG-A	3P-A	FT-A	R	A	P	M
Pruitt F	8-20	2-6	2-3	9	0	20	30
Underwood F	1-7	1-2	0-0	3	1	3	33
Ortega C	1-7	0-0	1-2	4	4	3	26
Keathley G	1-1	0-0	0-0	1	5	2	29
Quinn G	3-7	1-3	0-1	2	3	7	36
Moon	2-6	1-2	0-0	1	1	5	13
Holman	2-5	0-0	2-2	4	0	6	17
McDaniel	2-3	0-1	3-7	1	0	7	9
Ar. Adams	0-1	0-0	0-0	1	0	0	7
TOTALS	20-57	5-14	8-15	30	14	53	200
	(.351)	(.357)	(.533)				

OFFICIALS: Cathi Cornell, Norma Leibfreid, Joe Rocco
TECHNICAL FOULS: None
ATTENDANCE: 154

IDAHO STATE 74
CAL STATE FULLERTON 58

12.31.03 • Titan Gym • Fullerton, Calif.

	1	2	T
Idaho State (7-3)	41	33	74
Cal State Fullerton (0-8)	24	34	58

BENGALS	FG-A	3P-A	FT-A	R	A	P	M
Whitley F	3-5	2-3	2-2	2	6	10	26
Gifford F	13-19	0-1	0-0	6	2	26	33
Hays C	4-7	1-3	2-2	6	0	11	28
Barron G	2-7	0-2	0-0	7	5	4	23
Brossman G	4-11	3-7	0-0	4	2	11	30
Udy	0-4	0-2	0-0	0	3	0	17
Marekova	2-6	2-4	0-1	4	0	6	12
Christensen	0-2	0-0	0-0	2	2	0	12
Ferguson	0-0	0-0	0-0	0	0	0	4
Anderson	1-2	0-0	4-4	9	1	6	15
TOTALS	29-63	8-22	8-9	42	21	74	200
	(.460)	(.364)	(.889)				

TITANS	FG-A	3P-A	FT-A	R	A	P	M
Pruitt F	3-4	1-1	0-0	4	0	7	15
Underwood F	2-6	0-2	2-2	2	2	6	27
Ortega C	5-10	0-0	5-8	9	2	15	37
McDaniel G	1-3	0-0	0-0	2	0	2	6
Quinn G	5-12	0-1	7-8	2	2	17	37
Sorrell	2-10	0-1	0-2	3	0	4	18
Moon	0-1	0-1	0-0	1	0	0	7
Taylor	0-5	0-0	1-2	1	0	1	25
Keathley	1-1	1-1	0-0	1	0	3	10
Holman	0-2	0-0	1-2	2	0	1	10
Lee	0-0	0-0	2-2	2	1	2	8
TOTALS	19-54	2-7	18-26	33	7	58	200
	(.352)	(.286)	(.692)				

OFFICIALS: Adria Molina, Mark Penaflo, Marshall Belgen
TECHNICAL FOULS: None
ATTENDANCE: 101

CAL STATE FULLERTON 66
CAL STATE NORTHRIDGE 65

1.3.04 • The Matadome • Northridge, Calif.

	1	2	T
Cal State Fullerton (1-9, 1-0)	36	30	66
Cal State Northridge (1-8, 0-1)	37	28	65

TITANS	FG-A	3P-A	FT-A	R	A	P	M
Underwood F	2-4	0-1	2-4	2	0	6	20
Ortega C	6-7	0-0	2-2	5	3	14	25
Taylor G	0-2	0-0	2-2	3	3	2	29
Keathley G	5-7	3-5	0-0	1	7	13	38
Quinn G	5-8	2-4	3-4	7	3	15	34
Pruitt	4-8	0-1	0-0	11	0	8	25
Sorrell	2-2	0-0	0-0	1	0	4	6
Moon	2-5	0-1	0-0	0	0	4	11
Holman	0-1	0-0	0-0	1	0	0	10
Wagner	0-0	0-0	0-0	0	0	0	2
TOTALS	26-44	5-12	9-12	32	16	66	200
	(.591)	(.417)	(.750)				

MATADORS	FG-A	3P-A	FT-A	R	A	P	M
Gildersleeve *	4-11	2-6	0-0	1	3	10	36
Burries *	2-9	0-0	1-2	4	3	5	21
King *	5-14	0-2	4-6	7	2	14	31
Rhodes *	3-8	0-1	2-2	2	2	8	22
Tulikihifo *	8-15	1-2	1-2	7	4	18	37
O'Rourke	0-2	0-0	4-4	2	0	4	8
McCaa	0-1	0-1	0-0	1	0	5	
Ching	0-0	0-0	0-0	0	0	2	
Fuleki	2-7	0-1	1-2	2	2	5	16
Papac	0-1	0-0	0-0	0	0	2	
Johnson	0-0	0-0	0-0	1	0	0	5
Garcia	0-0	0-0	0-0	0	0	0	1
Anderson	0-0	0-0	1-2	3	1	1	8
Magee	0-0	0-0	0-0	0	0	0	2
Cushing	0-1	0-0	0-0	0	0	0	4
TOTALS	24-69	3-13	14-20	32	18	65	200
	(.348)	(.231)	(.700)				

OFFICIALS: Connie Perkins, Maj Forsberg, Henry Eshom
TECHNICAL FOULS: None
ATTENDANCE: 263

CAL STATE FULLERTON 64
PACIFIC 75

1.5.04 • Spanos Center • Stockton, Calif.

	1	2	T
Cal State Fullerton (1-10, 1-1)	27	37	64
Pacific (3-8, 2-0)	42	33	75

TITANS	FG-A	3P-A	FT-A	R	A	P	M
Holman F	2-3	0-0	0-1	0	1	4	15
Underwood F	3-7	2-4	4-6	3	4	12	35
Ortega C	2-8	0-0	1-2	11	1	5	36
Taylor G	1-3	0-0	0-0	1	0	2	19
Quinn G	7-15	4-8	2-3	10	3	20	37
Pruitt	8-18	1-5	2-2	10	0	19	26
Sorrell	0-2	0-0	0-1	0	0	0	4
Keathley	1-3	0-1	0-0	0	3	2	25
McDaniel	0-0	0-0	0-0	0	0	0	1
Wagner	0-1	0-1	0-0	1	1	0	2
TOTALS	24-60	7-19	9-15	39	13	64	200
	(.400)	(.368)	(.600)				

TIGERS	FG-A	3P-A	FT-A	R	A	P	M
d'Hondt F	2-4	0-0	7-10	6	0	11	22
Smith C	8-10	0-0	0-0	5	0	16	34
Menkens G	3-9	2-6	5-5	5	5	13	37
Wong G	3-7	0-0	3-4	3	6	9	37
Dinges G	8-17	2-9	0-0	9	3	18	40
Brantley	1-4	0-0	4-5	1	1	6	15
Crossland	1-1	0-0	0-1	0	1	2	3
Gibbard	0-2	0-0	0-0	1	0	0	12
TOTALS	26-54	4-15	19-25	34	16	75	200
	(.481)	(.267)	(.760)				

OFFICIALS: Paul Bates, Wendy Dailey, Annette Tracy
TECHNICAL FOULS: None
ATTENDANCE: 485

UC RIVERSIDE 56
CAL STATE FULLERTON 68

1.10.04 • Titan Gym • Fullerton, Calif.

	1	2	T
UC Riverside (2-10, 1-2)	26	30	56
Cal State Fullerton (2-10, 2-1)	29	39	68

UCR	FG-A	3P-A	FT-A	R	A	P	M
Reber F	1-5	0-0	4-4	4	1	6	31
Harris F	6-16	0-1	2-2	3	4	14	33
Stephens C	4-8	0-0	3-4	9	0	11	30
Peterson G	2-5	1-3	0-0	1	2	5	25
Peters G	4-4	0-0	5-8	2	1	13	25
Muir	0-3	0-0	0-0	1	0	0	16
Valdez	2-6	1-3	0-0	6	4	5	30
Spegel	1-2	0-0	0-0	0	0	2	10
TOTALS	20-49	2-7	14-18	34	12	56	200
	(.408)	(.286)	(.778)				

TITANS	FG-A	3P-A	FT-A	R	A	P	M
Holman F	0-1	0-0	0-0	3	1	0	16
Underwood F	4-12	3-8	1-2	10	1	12	37
Ortega C	4-8	0-0	2-4	6	2	10	37
Keathley G	2-6	2-5	2-2	1	4	8	29
Quinn G							

LONG BEACH STATE 77
CAL STATE FULLERTON 65

1.15.04 • Titan Gym • Fullerton, Calif.

	1	2	T
Long Beach State (5-9, 1-4)	34	43	77
Cal State Fullerton (2-11, 2-2)	37	28	65

49ERS	FG-A	3P-A	FT-A	R	A	P	M
McCutcheon F	7-12	0-1	3-3	9	3	17	33
Connors F	9-14	0-0	0-0	12	2	18	37
Glaeser C	5-9	0-0	4-4	9	3	14	33
Mack G	1-4	0-1	0-0	0	5	2	23
Wilson G	1-3	1-1	7-8	3	6	10	30
Baker	3-8	0-0	5-8	8	0	11	22
Bull	2-8	0-1	0-0	4	2	4	13
Rush	0-1	0-0	1-2	2	0	1	9
TOTALS	28-59	1-4	20-25	51	21	77	200
	(.475)	(.250)	(.800)				

TITANS	FG-A	3P-A	FT-A	R	A	P	M
Holman F	3-4	0-0	0-0	2	1	6	12
Underwood F	2-12	1-5	1-3	6	3	6	34
Ortega C	6-8	0-0	4-6	5	1	16	39
Keathley G	3-6	2-3	0-0	1	7	8	32
Quinn G	6-18	2-8	1-1	7	3	15	40
Pruitt	5-12	0-3	0-0	2	1	10	20
Sorrell	1-2	0-0	0-0	0	0	2	5
Moon	0-2	0-0	0-0	1	1	0	3
McDaniel	0-1	0-0	2-3	1	2	2	8
Wagner	0-1	0-1	0-0	0	0	0	3
Mosley	0-1	0-0	0-0	2	0	0	4
TOTALS	26-67	5-20	8-13	28	19	65	200
	(.388)	(.250)	(.615)				

OFFICIALS: Jay Schweitzer, Henry Eshom, Michol Murray
TECHNICAL FOULS: None
ATTENDANCE: 131

UC IRVINE 69
CAL STATE FULLERTON 57

1.17.04 • Titan Gym • Fullerton, Calif.

	1	2	T
UC Irvine (2-12, 1-5)	33	36	69
Cal State Fullerton (2-12, 2-3)	20	37	57

ANTEATERS	FG-A	3P-A	FT-A	R	A	P	M
Ned F	0-4	0-2	2-2	1	0	2	15
Callaway F	1-7	0-0	0-0	8	1	2	27
Biggins C	1-1	0-0	0-0	5	0	2	25
Ferguson G	4-8	3-6	3-4	2	0	14	32
Green G	5-9	5-6	2-4	1	7	17	39
Duda	5-9	0-0	8-10	8	4	18	33
Urban	0-0	0-0	0-0	0	0	0	1
Yadon	1-1	0-0	4-4	3	1	6	10
Usher	4-6	0-0	0-0	2	0	8	18
TOTALS	21-45	8-14	19-24	33	13	69	200
	(.467)	(.571)	(.792)				

TITANS	FG-A	3P-A	FT-A	R	A	P	M
Holman F	1-2	0-0	2-4	2	1	4	23
Underwood F	3-8	1-4	0-0	3	0	7	25
Ortega C	2-6	0-0	3-3	5	2	7	23
Keathley G	1-2	1-1	0-0	0	3	3	25
Quinn G	3-8	1-5	0-0	2	4	7	34
Pruitt	3-11	1-4	3-4	7	0	10	21
Sorrell	2-4	0-0	1-1	1	0	5	10
Moon	0-2	0-0	0-0	1	0	0	6
McDaniel	1-2	0-0	3-4	2	2	5	12
Wagner	3-7	3-5	0-0	3	2	9	18
Mosley	0-2	0-0	0-2	1	0	0	3
TOTALS	19-54	7-19	12-18	32	14	57	200
	(.352)	(.368)	(.667)				

OFFICIALS: Anthony Feroah, Wendy Dailey, Rick Rodman
TECHNICAL FOULS: Tamara Quinn (CSF)
ATTENDANCE: 122

CAL STATE FULLERTON 68
UTAH STATE 69

1.22.04 • Dee Glen Smith Spectrum • Logan, Utah

	1	2	T
Cal State Fullerton (3-12, 3-3)	33	36	69
Utah State (2-12, 2-4)	26	42	68

TITANS	FG-A	3P-A	FT-A	R	A	P	M
Holman F	2-4	0-0	0-0	3	0	4	14
Underwood F	1-4	1-2	0-0	0	1	3	13
Ortega C	2-10	0-0	1-1	6	0	5	34
Keathley G	7-12	3-6	0-0	1	4	17	33
Quinn G	3-8	1-2	0-1	7	4	7	25
Pruitt	2-5	1-1	4-4	2	1	9	14
Sorrell	2-4	0-0	0-0	3	1	4	9
Lee	1-2	0-1	0-0	0	0	2	6
McDaniel	1-2	0-0	2-2	3	1	4	17
Wagner	4-5	4-5	0-0	1	4	12	22
Mosley	1-2	0-0	0-0	1	2	2	13
TOTALS	26-58	10-17	7-8	30	18	69	200
	(.448)	(.588)	(.875)				

AGGIES	FG-A	3P-A	FT-A	R	A	P	M
Anderson F	0-3	0-2	0-0	2	0	0	15
Freeman F	4-4	0-0	1-1	1	1	9	20
Aird C	8-14	0-0	2-2	13	1	18	37
Jennings G	1-3	0-0	1-3	2	6	3	33
Zdenek G	4-15	0-2	4-4	3	4	12	34
Torp	2-2	1-1	2-2	1	0	7	11
Grant	0-1	0-1	1-2	0	0	1	4
Tressler	2-5	1-2	2-2	0	2	7	20
Johnston	1-1	0-0	0-0	0	0	2	4
Hagen	4-7	1-4	0-1	6	4	9	22
TOTALS	26-55	3-12	13-17	33	18	68	200
	(.473)	(.250)	(.765)				

OFFICIALS: Mike Petty, Bob LaShaw, Ken Sowby
TECHNICAL FOULS: None
ATTENDANCE: 587

CAL STATE FULLERTON 68
IDAHO 65

1.24.04 • Cowan Spectrum • Moscow, Idaho

	1	2	T
Cal State Fullerton (4-12, 4-3)	36	32	68
Idaho (13-3, 5-2)	26	39	65

TITANS	FG-A	3P-A	FT-A	R	A	P	M
Holman F	3-8	0-0	0-0	3	0	6	24
Underwood F	2-6	1-1	0-0	3	1	5	20
Ortega C	5-7	0-0	0-0	5	0	10	20
Keathley G	4-7	2-4	0-0	2	4	10	36
Quinn G	9-16	1-5	3-3	5	7	22	40
Pruitt	1-1	0-0	0-0	2	0	2	6
Sorrell	3-7	0-2	2-2	4	1	8	12
McDaniel	1-2	0-0	0-0	0	1	2	9
Wagner	1-5	1-5	0-0	3	2	3	20
Mosley	0-0	0-0	0-0	1	0	2	13
TOTALS	29-59	5-17	5-5	30	16	68	200
	(.492)	(.294)	(1.000)				

VANDALS	FG-A	3P-A	FT-A	R	A	P	M
Benson F	1-7	0-3	1-3	4	5	3	33
Thoeke F	4-9	2-6	0-0	10	2	10	40
Faurholt C	11-19	2-3	6-9	4	1	30	40
Mitchell G	5-13	2-6	4-5	5	5	16	37
Fellon G	2-3	0-0	2-2	4	4	6	37
Goetz	0-0	0-0	0-0	0	0	0	7
Halliday	0-0	0-0	0-0	0	1	0	6
TOTALS	23-51	6-18	13-19	31	18	65	200
	(.451)	(.333)	(.684)				

OFFICIALS: Anthony Feroah, Enola Reynolds, Darren Malm
TECHNICAL FOULS: None
ATTENDANCE: 2,115

CAL POLY 81
CAL STATE FULLERTON 83

1.29.04 • Titan Gym • Fullerton, Calif.

	1	2	T
Cal Poly (8-9, 4-4)	40	41	81
Cal State Fullerton (5-12, 5-3)	36	47	83

MUSTANGS	FG-A	3P-A	FT-A	R	A	P	M
Paterson F	6-14	0-0	2-3	8	2	14	35
Wittstrom F	1-1	0-0	2-2	3	1	4	10
Uphoff C	3-11	2-7	4-4	4	5	12	29
Anderson G	2-6	1-2	3-4	5	5	8	38
Taylor G	6-10	1-2	1-4	7	1	14	32
Howell	0-0	0-0	0-0	0	0	0	2
Dooley	3-8	2-7	0-0	3	1	8	16
Grieve	1-3	0-0	1-1	1	0	3	6
Eggleston	3-5	0-0	0-0	2	2	6	13
Givens-Davis	3-3	0-0	6-7	2	0	12	19
TOTALS	28-61	6-18	19-25	38	17	81	200
	(.459)	(.333)	(.760)				

TITANS	FG-A	3P-A	FT-A	R	A	P	M
Sorrell F	4-8	0-0	0-0	5	0	8	24
Wagner F	2-2	2-2	0-0	2	0	6	13
Ortega C	4-7	0-0	2-2	2	3	10	28
Keathley G	2-4	1-2	2-2	0	8	7	36
Quinn G	7-12	4-8	6-8	9	4	24	36
Pruitt	3-10	1-3	3-4	5	0	10	16
Moon	0-1	0-0	0-0	0	0	0	2
Holman	2-3	0-0	0-0	1	0	4	7
McDaniel	1-3	0-0	1-1	1	0	3	6
Underwood	4-7	2-4	1-2	1	3	11	27
Ar. Adams	0-1	0-0	0-0	0	1	0	5
TOTALS	29-58	10-19	15-19	30	19	83	200
	(.500)	(.526)	(.789)				

OFFICIALS: Janice Knudsen, Cyndi Dumo, Krista Shepard
TECHNICAL FOULS: None
ATTENDANCE: 169

UC SANTA BARBARA 67
CAL STATE FULLERTON 48

1.31.04 • Titan Gym • Fullerton, Calif.

	1	2	T
UC Santa Barbara (14-5, 8-1)	36	31	67
Cal State Fullerton (5-13, 5-4)	18	30	48

GAUCHOS	FG-A	3P-A	FT-A	R	A	P	M
Richardson F	2-6	1-1	1-2	7	4	6	29
Mann F	5-14	4-6	1-2	8	5	15	32
Taylor C	4-9	0-1	6-6	4	1	14	22
McDivitt G	3-5	2-3	1-3	5	3	9	23
Willett G	2-3	2-3	0-0	7	1	6	29
Bauman	0-1	0-0	3-4	2	0	3	8
O'Bryan	0-2	0-0	1-2	1	0	1	18
Bonds	1-						

CAL STATE FULLERTON 63
UC RIVERSIDE 67

2.7.04 • Student Rec. Center • Riverside, Calif.

		1	2	T					
Cal State Fullerton (5-14, 5-5)		33	30	63					
UC Riverside (4-14, 3-6)		34	33	67					
TITANS	FG-A	3P-A	FT-A	R	A	P	M		
Underwood F	2-11	1-6	2-2	4	2	7	31		
Sorrell F	3-7	0-0	0-0	5	0	6	21		
Ortega C	5-9	0-0	0-0	6	4	10	23		
Keathley G	2-5	2-5	2-2	0	1	8	23		
Quinn G	0-7	0-4	2-2	3	2	2	38		
Pruitt	5-13	1-3	1-2	10	1	12	17		
Moon	1-4	0-2	0-0	1	0	2	6		
Holman	0-1	0-0	0-0	0	0	0	2		
McDaniel	0-0	0-0	1-2	3	2	1	15		
Wagner	1-1	1-1	0-0	1	0	3	8		
Mosley	2-4	0-0	8-8	1	0	12	16		
TOTALS	21-62	5-21	16-18	43	12	63	200		
	(.339)	(.238)	(.889)						

		FG-A	3P-A	FT-A	R	A	P	M
UCR								
Muir F	1-3	0-0	2-2	12	1	4	27	
Harris F	5-14	1-1	2-2	3	2	13	32	
Reber C	4-11	0-1	2-2	9	2	10	34	
Reeves G	9-24	3-10	5-5	4	3	26	40	
Peters G	1-4	0-0	2-2	2	0	4	17	
Peterson	2-5	1-2	1-2	5	4	6	24	
Valdez	1-2	0-1	0-0	0	0	2	7	
Spegel	1-4	0-0	0-0	3	0	2	19	
TOTALS	24-67	5-15	14-15	41	12	67	200	
	(.358)	(.333)	(.933)					

OFFICIALS: Mike Brooks, Mark Penaflo, John Patterson
TECHNICAL FOULS: None
ATTENDANCE: -

CAL STATE FULLERTON 59
UC IRVINE 50

2.12.04 • Bren Center • Irvine, Calif.

		1	2	T					
Cal State Fullerton (6-14, 6-5)		34	25	59					
UC Irvine (4-16, 3-9)		23	27	50					
TITANS	FG-A	3P-A	FT-A	R	A	P	M		
Pruitt F	4-10	0-1	4-5	9	1	12	24		
Underwood F	8-15	2-6	0-1	4	3	18	40		
Ortega C	2-5	0-0	0-0	8	1	4	32		
Keathley G	2-9	2-9	0-0	0	2	6	34		
Quinn G	6-13	4-7	1-2	6	3	17	40		
Moon	0-2	0-0	0-0	0	0	0	1		
Holman	1-2	0-0	0-0	0	0	2	6		
McDaniel	0-0	0-0	0-0	1	0	0	6		
Ar. Adams	0-0	0-0	0-0	0	0	0	4		
Mosley	0-1	0-0	0-0	3	0	0	13		
TOTALS	23-57	8-23	5-8	32	10	59	200		
	(.404)	(.348)	(.625)						

		FG-A	3P-A	FT-A	R	A	P	M
ANTEATERS								
Urban F	0-0	0-0	0-0	2	0	0	9	
Callaway F	8-12	0-0	3-5	6	1	19	37	
Biggins C	0-1	0-0	1-2	3	0	1	16	
Stanley G	3-4	0-0	0-0	3	2	6	24	
Green G	1-10	0-3	0-0	4	2	2	40	
Ferguson	2-6	1-3	0-0	4	3	5	25	
Ned	2-3	0-0	1-2	4	0	5	22	
Yadon	5-7	0-0	2-4	4	0	12	18	
Usher	0-1	0-0	0-0	0	0	0	9	
TOTALS	21-44	1-6	7-13	30	8	50	200	
	(.477)	(.167)	(.538)					

OFFICIALS: Cathi Cornell, Wendy Durley, Rick Rodman
TECHNICAL FOULS: None
ATTENDANCE: 339

CAL STATE FULLERTON 43
LONG BEACH STATE 74

2.14.04 • The Pyramid • Long Beach, Calif.

		1	2	T					
Cal State Fullerton (6-15, 6-6)		12	31	43					
Long Beach State (10-12, 6-7)		37	37	74					
TITANS	FG-A	3P-A	FT-A	R	A	P	M		
Pruitt F	2-10	0-1	0-0	0	0	4	15		
Underwood F	6-14	1-5	0-0	6	1	13	35		
Ortega C	2-3	0-0	3-4	3	1	7	25		
Keathley G	0-4	0-2	0-0	2	1	0	18		
Quinn G	3-8	0-2	2-2	3	2	8	30		
Sorrell	0-2	0-0	0-0	1	0	0	7		
Moon	2-8	0-1	0-2	2	1	4	19		
Holman	0-3	0-0	0-1	5	0	0	11		
Lee	0-0	0-0	1-2	0	0	1	5		
McDaniel	0-0	0-0	2-3	1	1	2	15		
Ar. Adams	1-1	0-0	0-0	3	0	2	8		
Mosley	1-2	0-0	0-0	1	1	2	12		
TOTALS	17-55	1-11	8-14	30	8	43	200		
	(.309)	(.091)	(.571)						

		FG-A	3P-A	FT-A	R	A	P	M
49ERS								
Connors F	7-9	0-0	0-0	8	2	14	26	
Glaeser C	3-9	0-1	2-2	7	4	8	25	
McCurcheon G	4-8	0-0	0-0	5	4	8	26	
Mack G	3-3	1-1	0-0	4	5	7	25	
Wilson G	4-8	1-2	3-6	0	4	12	24	
Blevins	1-5	0-1	2-2	2	1	4	7	
Ho	1-1	1-1	0-0	0	0	3	3	
Quan	1-2	1-1	0-0	0	1	3	10	
Baker	2-7	0-0	0-0	3	0	4	22	
Bull	4-8	1-3	2-2	6	0	11	18	
Rush	0-0	0-0	0-0	1	0	0	8	
Ferrell	0-1	0-0	0-0	2	0	0	6	
TOTALS	30-61	5-10	9-12	44	21	74	200	
	(.492)	(.500)	(.750)					

OFFICIALS: Janice Knudsen, Kali Kimura, Alma Garcia
TECHNICAL FOULS: None
ATTENDANCE: 701

IDAHO 78
CAL STATE FULLERTON 69

2.19.04 • Titan Gym • Fullerton, Calif.

		1	2	T					
Idaho (18-5, 10-4)		38	40	78					
Cal State Fullerton (6-16, 6-7)		31	38	69					
VANDALS	FG-A	3P-A	FT-A	R	A	P	M		
Benson F	3-5	2-4	0-0	3	2	8	22		
Felton F	0-2	0-1	2-2	0	3	2	38		
Thoelke C	5-10	0-2	2-2	4	3	12	37		
Mitchell G	3-7	0-3	2-2	4	5	8	33		
Faurholt G	13-24	4-8	9-9	5	3	39	40		
Goetz	2-3	0-0	2-2	3	1	6	18		
Halliday	1-2	1-1	0-0	2	1	3	12		
TOTALS	27-53	7-19	17-17	27	18	78	200		
	(.509)	(.368)	(1.000)						

		FG-A	3P-A	FT-A	R	A	P	M
TITANS								
Holman F	1-1	0-0	0-0	1	0	2	8	
Underwood F	7-18	5-8	4-4	4	0	23	40	
Ortega C	5-10	0-0	0-0	4	4	10	30	
Keathley G	1-1	0-0	0-0	0	3	2	20	
Quinn G	3-9	1-5	0-0	8	6	7	38	
Pruitt	7-14	0-0	1-2	7	1	15	20	
Sorrell	2-6	0-0	0-0	4	1	4	19	
Moon	0-2	0-1	0-0	0	1	0	6	
McDaniel	0-0	0-0	0-0	0	0	0	5	
Wagner	2-4	2-4	0-1	3	3	6	13	
Mosley	0-0	0-0	0-0	0	0	0	1	
TOTALS	28-65	8-18	5-7	37	19	69	200	
	(.431)	(.444)	(.714)					

OFFICIALS: Terry McIntyre, Alma Garcia, Krista Shephard
TECHNICAL FOULS: None
ATTENDANCE: 102

UTAH STATE 59
CAL STATE FULLERTON 71

2.21.04 • Titan Gym • Fullerton, Calif.

		1	2	T					
Utah State (4-19, 4-11)		31	28	59					
Cal State Fullerton (7-16, 7-7)		37	34	71					
AGGIES	FG-A	3P-A	FT-A	R	A	P	M		
Tressler F	4-9	1-1	2-2	5	4	11	38		
Freeman F	3-5	0-0	2-2	5	2	8	21		
Aird C	3-4	0-0	9-14	7	1	15	27		
Johnston G	1-4	1-2	0-0	3	3	2	29		
Zdenek G	4-14	1-6	2-5	5	1	11	31		
Anderson	0-0	0-0	0-0	0	0	0	1		
Torp	1-3	1-2	1-2	2	0	4	15		
Peterson-Grant	2-2	1-1	2-2	0	0	7	4		
Brox	0-2	0-0	0-0	1	0	0	15		
Stuart	0-1	0-1	0-0	0	1	0	1		
Hagen	0-0	0-0	0-0	0	0	0	19		
TOTALS	18-44	5-13	18-27	35	11	59	200		

CAL STATE FULLERTON 38
UC SANTA BARBARA 75

3.1.04 • The Thunderdome • Santa Barbara, Calif.

		1	2	T				
Cal State Fullerton (7-18, 7-9)		16	22	38				
UCSB (21-6, 15-1)		33	42	75				
TITANS	FG-A	3P-A	FT-A	R	A	P	M	
Moon F	0-3	0-0	0-0	1	0	0	15	
Mosley F	1-4	0-0	0-1	6	0	2	16	
Ortega C	2-10	0-0	2-2	5	0	6	25	
Keathley G	3-6	1-2	0-0	1	2	7	36	
Underwood G	2-11	0-5	0-0	4	1	4	36	
Pruitt	2-10	0-0	7-9	7	2	11	18	
Sorrell	1-4	0-0	0-0	5	0	2	14	
Lee	0-0	0-0	0-0	0	0	0	4	
McDaniel	0-3	0-1	1-2	0	2	1	16	
Wagner	1-7	1-6	0-0	0	0	3	14	
Ar. Adams	1-2	0-0	0-0	0	0	2	6	
TOTALS	13-60	2-14	10-14	30	7	38	200	
	(.217)	(.143)	(.714)					

		FG-A	3P-A	FT-A	R	A	P	M
GAUCHOS								
Willett F	4-7	2-3	2-2	5	3	12	28	
Mann F	7-10	0-0	3-4	11	2	17	26	
Taylor C	4-11	0-1	0-0	6	1	8	24	
McDivitt G	5-9	5-7	0-2	6	5	15	27	
Fisher G	4-6	0-0	0-0	3	5	8	26	
Bauman	1-2	0-0	4-4	2	0	6	6	
Richardson	2-3	0-0	0-1	6	5	4	21	
O'Bryan	0-1	0-0	0-0	1	0	0	11	
Bonds	0-2	0-0	0-0	7	0	0	16	
Green	2-4	0-0	1-4	4	0	5	15	
TOTALS	29-55	7-11	10-17	51	21	75	200	
	(.527)	(.636)	(.588)					

OFFICIALS: Cathi Cornell, Terry McIntyre, Sheila Fitzgerald
TECHNICAL FOULS: None
ATTENDANCE: 1,640

PACIFIC 80
CAL STATE FULLERTON 70

3.4.04 • Titan Gym • Fullerton, Calif.

		1	2	T				
Pacific (13-13, 12-5)		45	35	80				
Cal State Fullerton (7-19, 7-10)		29	41	70				
TIGERS	FG-A	3P-A	FT-A	R	A	P	M	
Nederostek F	4-6	0-0	2-4	9	2	10	32	
Dinges F	4-7	4-6	7-8	1	3	19	35	
Smith C	2-4	0-0	3-4	2	0	7	16	
Menkens G	2-11	0-7	2-2	4	5	6	34	
Wong G	4-9	0-1	2-4	7	11	10	39	
Hillman	2-3	1-2	0-0	2	0	5	9	
Crossland	0-0	0-0	0-0	1	0	0	3	
d'Hondt	9-12	0-0	3-7	7	2	21	26	
Dolezal	0-0	0-0	0-0	0	0	0	1	
Gibbard	1-1	0-0	0-0	2	0	2	5	
TOTALS	28-53	5-16	19-29	38	23	80	200	
	(.528)	(.313)	(.655)					

		FG-A	3P-A	FT-A	R	A	P	M
TITANS								
Pruitt F	10-19	2-5	7-8	8	0	29	23	
Underwood F	1-7	0-4	2-2	4	3	4	38	
Ortega C	4-10	0-0	6-8	8	2	14	38	
Keathley G	3-9	2-6	0-0	1	4	8	32	
Quinn G	3-9	1-3	0-0	1	2	7	34	
Sorrell	0-0	0-0	0-0	0	0	0	4	
Moon	1-3	0-0	1-2	2	2	3	7	
Holman	0-0	0-0	0-0	0	0	0	4	
McDaniel	1-1	0-0	2-4	0	1	4	8	
Wagner	0-0	0-0	0-0	1	0	0	2	
Ar. Adams	0-0	0-0	1-2	0	0	1	7	
Mosley	0-0	0-0	0-0	0	0	0	3	
TOTALS	23-58	5-18	19-26	30	14	70	200	
	(.397)	(.278)	(.731)					

OFFICIALS: Maj Forsberg, Debbie Kotani, Alma Garcia
TECHNICAL FOULS: None
ATTENDANCE: 142

CAL STATE NORTHRIDGE 65
CAL STATE FULLERTON 73

3.6.04 • Titan Gym • Fullerton, Calif.

		1	2	T				
Cal State Northridge (6-20, 5-13)		30	35	65				
Cal State Fullerton (8-19, 8-10)		25	48	73				
MATADORS	FG-A	3P-A	FT-A	R	A	P	M	
King F	4-8	0-0	0-0	8	2	8	28	
Tulikihiho F	6-19	0-4	4-5	19	1	16	33	
McCaa G	2-4	0-1	0-0	1	0	4	18	
Gildersleeve G	2-11	0-5	1-1	2	1	5	29	
Rhodes G	4-12	3-7	0-0	7	5	11	33	
O'Rourke	0-0	0-0	0-0	0	0	0	4	
Ching	1-3	0-0	0-0	1	0	2	11	
Fuleki	7-12	3-7	0-0	2	3	17	26	
Johnson	0-0	0-0	0-0	0	1	0	5	
Anderson	1-3	0-0	0-0	1	2	2	13	
TOTALS	27-72	6-24	5-6	42	15	65	200	
	(.375)	(.250)	(.833)					

		FG-A	3P-A	FT-A	R	A	P	M
TITANS								
Pruitt F	10-15	1-1	1-1	3	4	22	28	
Underwood F	2-7	1-4	2-2	7	7	7	30	
Ortega C	6-10	0-0	2-2	4	0	14	29	
Keathley G	3-6	3-4	1-2	0	7	10	31	
Quinn G	2-7	1-4	1-2	5	3	6	37	
Sorrell	2-3	0-0	0-0	0	1	4	12	
Moon	0-0	0-0	0-0	0	1	0	5	
Holman	0-0	0-0	0-0	0	0	0	1	
McDaniel	0-0	0-0	0-0	2	1	0	5	
Wagner	2-2	2-2	0-0	0	0	6	8	
Mosley	2-4	0-0	0-0	6	1	4	14	
TOTALS	29-54	8-15	7-9	31	25	73	200	
	(.537)	(.533)	(.778)					

OFFICIALS: Mike Hay, Kali Kimura, Rick Rodman
TECHNICAL FOULS: None
ATTENDANCE: 207

2004 BIG WEST CONFERENCE WOMEN'S BASKETBALL TOURNAMENT

ANAHEIM CONVENTION CENTER • MARCH 10-13, 2004

LONG BEACH STATE

game 1

Noon PST

UTAH STATE

SESSION 1

CS FULLERTON

game 2

30 min. after Gm 1

UC RIVERSIDE

PACIFIC

game 3

Noon PST

Lowest Remaining Seed

SESSION 3

CAL POLY

game 4

30 min. after Gm 3

Highest Remaining Seed

UC SANTA BARBARA

game 5

Noon PST

Lowest Remaining Seed

SESSION 5

IDAHO

game 6

30 min. after Gm 5

Lowest Remaining Seed

game 7

SESSION 7

1 p.m. PST
Fox Sports Net

Big West Champion
NCAA Tournament
Qualifier



#00 • AMBER PRUITT

6-1 • SOPHOMORE • FORWARD • CARSON, CALIF. • NARBONNE HS

SEASON NOTES...

- Earned her first career Big West Player of the Week award on March 8 after avg. 25.5 ppg against Pacific and Northridge
- Has posted four double-doubles on the year, ranking tied for seventh in the Big West in that category
- Had her first career 20-point game against Fresno State (Dec. 19, 2003)
- Put together back-to-back 20 point games against Pacific and Cal State Northridge, including a career-high 29 vs. the Tigers
- Scored 10-or-more points in 17 of 28 games -- including seven of her last nine

PRUITT'S LAST THREE GAMES...

Opponent	FG-A	PCT.	3P-A	PCT	FT-A	PCT	OR	DR	TR	AVG	PF	PTS	AVG	A	TO	B	S	MIN
at UC Santa Barbara	2-10	.200	0-0	.000	7-9	.778	3	4	7	--	4	11	--	2	2	0	3	18
vs. Pacific	10-19	.526	2-5	.400	7-8	.875	3	5	8	--	4	29	--	0	0	0	0	23
vs. CS Northridge	10-15	.667	1-1	1.000	1-1	1.000	0	3	3	--	5	22	--	4	3	2	1	28
TOTALS	22-44	.500	3-6	.500	15-18	.833	6	12	18	6.0	13	62	20.7	6	5	2	4	69



#4 • CYNTHIA SORRELL

6-1 • JUNIOR • FORWARD • OCEANSIDE, CALIF. • PALOMAR COLLEGE

SEASON NOTES...

- Solid post off the bench for the Titans who has appeared in 25 of 28 games
- Scored a career-high 10 points on the road against Kansas
- Grabbed a career-high eight rebounds in her first Division I game against Fordham
- Ranks seventh on the team in scoring (3.0 ppg) and fifth in rebounding (2.1 rpg)

SORRELL'S LAST THREE GAMES...

Opponent	FG-A	PCT.	3P-A	PCT	FT-A	PCT	OR	DR	TR	AVG	PF	PTS	AVG	A	TO	B	S	MIN
at UC Santa Barbara	1-4	.250	0-0	.000	0-0	.000	2	3	5	--	4	2	--	0	1	0	0	14
vs. Pacific	0-0	.000	0-0	.000	0-0	.000	0	0	0	--	1	0	--	0	0	0	0	4
vs. CS Northridge	2-3	.667	0-0	.000	0-0	.000	0	0	0	--	0	4	--	1	0	0	0	12
TOTALS	3-7	.429	0-0	.000	0-0	.000	2	3	5	1.7	5	6	2.0	1	1	0	0	30



#10 • ANDREA ADAMS

5-6 • SOPHOMORE • GUARD • LYNWOOD, CALIF. • LYNWOOD HS

SEASON NOTES...

- Has missed the entire 2003-04 season due to academic disqualification
- Named to the Big West Conference All-Freshman Team in 2002-03
- Appeared in all 28 games last season, averaging 6.5 ppg, 1.5 rpg
- Her 46 assists were third on the team
- Had seven double-digit scoring games as a freshman

ADAMS' LAST THREE GAMES...

Opponent	FG-A	PCT.	3P-A	PCT	FT-A	PCT	OR	DR	TR	AVG	PF	PTS	AVG	A	TO	B	S	MIN
at UC Santa Barbara																		
vs. Pacific																		
vs. CS Northridge																		
TOTALS	--	--	--	--	--	--	--	--	--	--	--	--	--	--	--	--	--	--



#11 • TESSA MOON

5-8 • SOPHOMORE • GUARD/FORWARD • SAN FRANCISCO, CALIF. • SACRED HEART CATHEDRAL PREP

SEASON NOTES...

- Matched her point total for all of freshman year in her first game, scoring 16 points against Fordham (Nov. 21)
- Shooter off the bench, has appeared in 24 of 28 games for the Titans
- Averaged 9.4 ppg in her first five contests of the year -- including her first four collegiate starts

MOON'S LAST THREE GAMES...

Opponent	FG-A	PCT.	3P-A	PCT	FT-A	PCT	OR	DR	TR	AVG	PF	PTS	AVG	A	TO	B	S	MIN
at UC Santa Barbara	0-3	.000	0-0	.000	0-0	.000	0	1	1	--	0	0	--	0	1	0	0	15
vs. Pacific	1-3	.333	0-0	.000	1-2	.500	1	1	2	--	1	3	--	2	1	0	1	7
vs. CS Northridge	0-0	.000	0-0	.000	0-0	.000	0	0	0	--	1	0	--	1	2	0	0	5
TOTALS	1-6	.167	0-0	.000	1-2	.500	1	2	3	1.0	2	3	1.0	3	4	0	1	27



14 • AUDREY TAYLOR

5-5 • SOPHOMORE • GUARD • WATTS, CALIF. • LYNWOOD HS

SEASON NOTES...

- Has missed all but three games after having knee surgery to repair an injury suffered during her freshman year
- Scored 2 points twice at Northridge (Jan. 3) and at Pacific (Jan. 5)
- Dished out three assists against the Matadors (Jan. 3)
- Tallied eight steals in only three appearances this season
- Started 20-of-23 games at point guard in 2002-03, averaging 5.1 ppg, 2.6 rpg, and 3.04 apg

TAYLOR'S LAST THREE GAMES...

Opponent	FG-A	PCT.	3P-A	PCT	FT-A	PCT	OR	DR	TR	AVG	PF	PTS	AVG	A	TO	B	S	MIN
at UC Santa Barbara																		
vs. Pacific																		
vs. CS Northridge																		
TOTALS	--	--	--	--	--	--	--	--	--	--	--	--	--	--	--	--	--	--



15 • MEGHANN KEATHLEY

5-5 • JUNIOR • GUARD • DANVILLE, CALIF. • CARONDELET HS

SEASON NOTES...

- Has appeared in 27 of 28 games, making 24 starts all at the point guard position
- Among Big West leaders in assists (7th - 3.52 apg), assist-to-turnover ratio (3rd - 1.42), and three-point percentage (4th - .392)
- Has four double-digit scoring performances on the year, ranking fifth on the team in that category
- Scored a career-high 17 points at Utah State to help lead the Titans to a victory
- Has dished out five or more assists in nine games this season, including eight in a win over Cal Poly at home
- Scored 13 points in a win at Cal State Northridge, and twice scored 10 points at Idaho and vs. Northridge at home

KEATHLEY'S LAST THREE GAMES...

Opponent	FG-A	PCT.	3P-A	PCT	FT-A	PCT	OR	DR	TR	AVG	PF	PTS	AVG	A	TO	B	S	MIN
at UC Santa Barbara	3-6	.500	1-2	.500	0-0	.000	0	1	1	--	0	7	--	2	4	0	1	36
vs. Pacific	3-9	.333	2-6	.333	0-0	.000	0	1	1	--	3	8	--	4	1	0	1	32
vs. CS Northridge	3-6	.500	3-4	.750	1-2	.500	0	0	0	--	0	10	--	7	2	0	2	31
TOTALS	9-21	.429	6-12	.500	1-2	.500	0	2	2	0.67	3	25	8.3	13	7	0	4	99



20 • CATHERINE HOLMAN

6-2 • JUNIOR • FORWARD • MENLO PARK, CALIF. • SACRED HEART PREP

SEASON NOTES...

- Has appeared in 24 games for the Titans with nine starts, but is averaging only 11.6 mpg off the bench
- Scored a season-high 10 points and grabbed nine rebounds in a loss to UNLV (Dec. 13) at Titan Gym
- Grabbed at least one rebound in all but six of the games in which she has appeared
- Leads the team with a .464 (26-for-56) field goal percentage

HOLMAN'S LAST THREE GAMES...

Opponent	FG-A	PCT.	3P-A	PCT	FT-A	PCT	OR	DR	TR	AVG	PF	PTS	AVG	A	TO	B	S	MIN
at UC Santa Barbara																		
vs. Pacific	0-0	.000	0-0	.000	0-0	.000	0	0	0	--	0	0	--	0	0	0	0	4
vs. CS Northridge	0-0	.000	0-0	.000	0-0	.000	0	0	0	--	0	0	--	0	1	0	0	1
TOTALS	0-0	.000	0-0	.000	0-0	.000	0	0	0	--	0	0	--	0	1	0	0	5



21 • NIKKI LEE

5-10 • SENIOR • FORWARD • HUNTINGTON BEACH, CALIF. • MARINA HS

SEASON NOTES...

- Has appeared in only 11 games this season off the bench
- Scored two points on three different occasions this year against Idaho State, Utah State, and Cal Poly
- Grabbed a season-high two rebounds against Idaho State

LEE'S LAST THREE GAMES...

Opponent	FG-A	PCT.	3P-A	PCT	FT-A	PCT	OR	DR	TR	AVG	PF	PTS	AVG	A	TO	B	S	MIN
at UC Santa Barbara	0-0		0-0		0-0		0	0	0		0	0		0	0	0	0	4
vs. Pacific																		
vs. CS Northridge																		
TOTALS	0-0	.000	0-0	.000	0-0	.000	0	0	0	--	0	0	--	0	0	0	0	4



#22 • INDIA MCDANIEL

5-7 • FRESHMAN • GUARD • SACRAMENTO, CALIF. • LAGUNA CREEK HS

SEASON NOTES...

- Appeared in 26 of 28 games for the Titans, starting two of them
- Scored a career high seven points in a loss to Fresno State
- Had four points, two rebounds, and a career-high six assists in her first career start against San Diego State
- Has at least one assist in all but 12 games
- Has scored in all but nine games in which she has played

MCDANIEL'S LAST THREE GAMES...

Opponent	FG-A	PCT.	3P-A	PCT	FT-A	PCT	OR	DR	TR	AVG	PF	PTS	AVG	A	TO	B	S	MIN
at UC Santa Barbara	0-3	.000	0-1	.000	1-2	.500	0	0	0	--	0	1	--	2	2	0	1	16
vs. Pacific	1-1	1.000	0-0	.000	2-4	.500	0	0	0	--	0	4	--	1	2	0	0	8
vs. CS Northridge	0-0	.000	0-0	.000	0-0	.000	0	2	2	--	0	0	--	1	2	0	0	5
TOTALS	1-4	.250	0-1	.000	3-6	.500	0	2	2	0.67	0	5	1.7	4	6	0	1	29



#23 • CHARLEE UNDERWOOD

5-10 • FRESHMAN • GUARD/FORWARD • SAN FRANCISCO, CALIF. • FRENCH-AMERICAN INT'L SCHOOL

SEASON NOTES...

- Named as one of five members on the Big West Conference All-Freshman Team for 2003-04
- Ranks fourth on the team in scoring (9.0 ppg) and fourth in rebounding (3.7 rpg), and leads the team in steals (38)
- Third on the team in three-point percentage (.322), but second in 3PM (37) and 3PA (115)
- Ranks fourth with 11 double-digit scoring performances, including five straight at one point
- Scored a career-high 23 points in a loss to Idaho on (Feb. 19)
- Notched her first career double-double in a win over UC Riverside (Jan. 10) with 12 points and 10 rebounds.

UNDERWOOD'S LAST THREE GAMES...

Opponent	FG-A	PCT.	3P-A	PCT	FT-A	PCT	OR	DR	TR	AVG	PF	PTS	AVG	A	TO	B	S	MIN
at UC Santa Barbara	2-11	.182	0-5	.000	0-0	.000	1	3	4	--	1	4	--	1	3	1	2	36
vs. Pacific	1-7	.143	0-4	.000	2-2	1.000	2	2	4	--	2	4	--	3	1	1	2	38
vs. CS Northridge	2-7	.286	1-4	.250	2-2	1.000	2	5	7	--	1	7	--	7	4	1	1	30
TOTALS	5-25	.200	1-13	.077	4-4	1.000	5	10	15	5.0	4	15	5.0	11	8	3	5	104



#25 • JAIME WAGNER

5-9 • SENIOR • FORWARD • FERNLEY, NEV. • LASSEN COMM. COLLEGE

SEASON NOTES...

- Has appeared in 22 games for the Titans, making four starts
- Scored a career-high 12 points in a win over Utah State (Jan. 22)
- Hit a three-pointer with 1:02 to play at Idaho to lift the Titans to a 68-65 win over the Vandals
- Shooting .400 (20-for-50) from the field with all but four of her shot attempts coming from beyond the three-point line
- One of three Titans (Keathley and Quinn) to have more assists than turnovers

WAGNER'S LAST THREE GAMES...

Opponent	FG-A	PCT.	3P-A	PCT	FT-A	PCT	OR	DR	TR	AVG	PF	PTS	AVG	A	TO	B	S	MIN
at UC Santa Barbara	1-7	.143	1-6	.167	0-0	.000	0	0	0	--	1	3	--	0	0	0	0	14
vs. Pacific	0-0	.000	0-0	.000	0-0	.000	0	1	1	--	0	0	--	0	1	0	0	2
vs. CS Northridge	2-2	1.000	2-2	1.000	0-0	.000	0	0	0	--	0	6	--	0	1	1	0	8
TOTALS	3-9	.333	3-8	.375	0-0	.000	0	1	1	0.3	1	9	3.0	0	2	1	0	24



#32 • ARIEL ADAMS

6-0 • FRESHMAN • FORWARD • NORWALK, CALIF. • TROY HS

SEASON NOTES...

- Rookie who has appeared in 15 games off the bench
- Scored her first career points and grabbed her first career rebounds against San Diego State on Dec. 1
- Grabbed a career-high four rebounds against UC Santa Barbara (Jan. 31)
- Scored two points and grabbed three rebounds at Long Beach State (Feb. 14)

ADAMS' LAST THREE GAMES...

Opponent	FG-A	PCT.	3P-A	PCT	FT-A	PCT	OR	DR	TR	AVG	PF	PTS	AVG	A	TO	B	S	MIN
at UC Santa Barbara	1-2	.500	0-0	.000	0-0	.500	0	0	0	--	1	2	--	0	0	0	0	6
vs. Pacific	0-0	.000	0-0	.000	1-2	.500	0	0	0	--	0	1	--	0	0	0	1	7
vs. CS Northridge	DID NOT PLAY																	
TOTALS	1-2	.500	0-0	.000	1-2	.500	0	0	0	0.0	1	3	1.5	0	0	0	1	13



#33 • ROCHELLE ORTEGA

6-2 • SENIOR • CENTER • FRESNO, CALIF. • FRESNO CITY COLLEGE

SEASON NOTES...

- Has started all 27 games this season and has a streak of 47 consecutive starts dating back to last season (29.5 mpg in '03-04)
- Ranks third on the team in scoring (9.3 ppg) and leads the team in rebounding (6.0 rpg)
- Ranks fifth on the school's career blocks list (62), standing three back of fourth place (Dee Braxton, 65)
- Her 23 blocks in 2003-04 rank ninth on the single-season list
- Shooting .433 from the field to lead Titan regulars and would rank 10th in the Big West, but does not have enough attempts
- Ranks second on the team with 14 double-digit scoring performances and has three double-doubles
- Scored a career-high 23 points and grabbed 13 rebounds at Cal Poly

ORTEGA'S LAST THREE GAMES...

Opponent	FG-A	PCT.	3P-A	PCT	FT-A	PCT	OR	DR	TR	AVG	PF	PTS	AVG	A	TO	B	S	MIN
at UC Santa Barbara	2-10	.200	0-0	.000	2-2	1.000	2	3	5	--	3	6	--	0	2	0	1	25
vs. Pacific	4-10	.400	0-0	.000	6-8	.750	3	5	8	--	2	14	--	2	0	2	3	38
vs. CS Northridge	6-10	.600	0-0	.000	2-2	1.000	2	2	4	--	3	14	--	0	1	2	0	29
TOTALS	12-30	.400	0-0	.000	10-12	.833	7	10	17	5.7	8	34	11.3	2	3	4	4	92



#44 • MELANIE MOSLEY

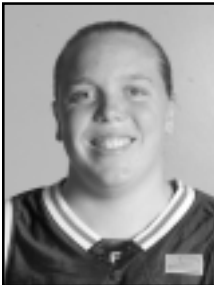
5-11 • JUNIOR • GUARD/FORWARD • HAWTHORNE, CALIF. • ST. BERNARD HS

SEASON NOTES...

- Has appeared in 19 of the Titans' 27 games, including a pair of starts
- Scored a career-high 12 points in a loss at UC Riverside (Feb. 7)
- Set a new career-high with five rebounds in the second game of the season against New Mexico
- Broke her career high with six boards against UCSB, and tied that mark two games later against Cal State Northridge

MOSLEY'S LAST THREE GAMES...

Opponent	FG-A	PCT.	3P-A	PCT	FT-A	PCT	OR	DR	TR	AVG	PF	PTS	AVG	A	TO	B	S	MIN
at UC Santa Barbara	1-4	.250	0-0	.000	0-1	.000	2	4	6	--	0	2	--	0	0	0	0	16
vs. Pacific	0-0	.000	0-0	.000	0-0	.000	0	0	0	--	0	0	--	0	0	0	1	3
vs. CS Northridge	2-4	.500	0-0	.000	0-0	.000	2	4	6	--	2	4	--	1	1	0	0	14
TOTALS	3-8	.375	0-0	.000	0-1	.000	4	8	12	4.0	2	6	2.0	1	1	0	1	33



#52 • TAMARA QUINN

5-7 • SENIOR • GUARD • LOMITA, CALIF. • BISHOP MONTGOMERY HS

SEASON NOTES...

- Named to the All-Big West Second Team for 2003-04, the first Titan since Andrea Thieme in 1996-97 to make the second team
- Led the team in scoring (11.1 ppg), ranked third in rebounding (4.4 rpg), and second in steals (31)
- Had 12 double-digit scoring performances to rank third on the team in that category
- Ranks among the school's career top 10 in eight different categories
- Ranks No. 12 on the school's all-time scoring list (1,079 points) and broke the 1,000-point barrier against Cal Poly on Jan. 29
- Shot .821 from the free throw line, which puts her fifth in the Big West and second all-time on the school's single-season charts
- Has four 20-point games this season, including 24 points twice against UC Riverside (Jan. 10) and Cal Poly (Jan. 29)
- Has started all but one game this season, missing the road game at UCSB due to a thumb injury

QUINN'S LAST THREE GAMES...

Opponent	FG-A	PCT.	3P-A	PCT	FT-A	PCT	OR	DR	TR	AVG	PF	PTS	AVG	A	TO	B	S	MIN
at UC Santa Barbara	DID NOT PLAY																	
vs. Pacific	3-9	.333	1-3	.333	0-0	.000	0	1	1	--	5	7	--	2	8	0	2	34
vs. CS Northridge	2-7	.286	1-4	.250	1-2	.500	0	5	5	--	1	6	--	3	2	0	3	37
TOTALS	5-16	.313	2-7	.286	1-2	.500	0	6	6	3.0	6	13	6.5	5	10	0	5	71